

# LIVERNE

TRUCK EQUIPMENT

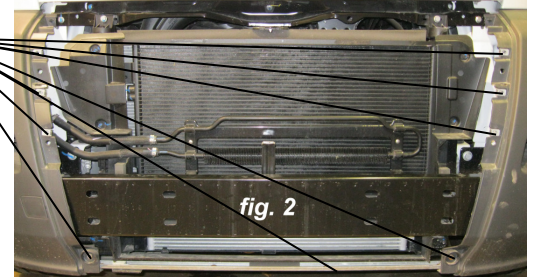
## 205910/205530 DODGE PRO MASTER VAN 2014-CURRENT

### INSTALLATION INSTRUCTIONS

READ THE INSTRUCTIONS COMPLETELY AND CHECK TO MAKE SURE THAT ALL OF THE REQUIRED PARTS ARE ON HAND BEFORE STARTING THE INSTALLATION.

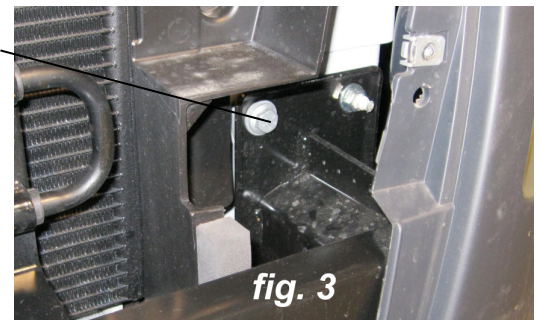
**NOTE: BEFORE YOU MOUNT THE TUFF GUARD INTO PLACE, DEPENDING ON YOUR STATE THERE IS AN OPTIONAL LICENSE PLATE BRACKET (ITEM # 6) THAT CAN BE USED TO RELOCATE THE LICENSE PLATE TO THE HORIZONTAL TUBES, USING THE TWO SELF DRILLING SCREWS (ITEM #7) IF SO DESIRED.**

1. OPEN THE HOOD AND REMOVE THE FACTORY GRILLE, SHOWN IN *fig. 2*. (TORX FASTENERS)
2. REMOVE THE CENTER FASCIA. (TORX FASTENERS)
3. INSTALL THE 1/2"-13 X 2" CLIPPED HEAD CARRIAGE BOLTS (ITEM #8) INTO THE 1/2" SPACERS (ITEM #7) AND INSTALL THE 1/2" FLAT WASHERS (ITEM #17) AND 1/2" FLANGE NUTS (ITEM #14)



4. INSERTS THE HEADS OF THE CARRIAGE BOLTS INTO THE OUTSIDE SLOTTED HOLES OF THE BUMPER BAR AND TURN THEM 90°. PUSH THEM TO THE OUTSIDE OF THE SLOT. THE BOLTS SHOULD BE APPROXAMATELY 32-3/4" ON CENTER. TIGHTEN THE NUTS TO 65 FOOT-POUNDS. SEE *fig. 1 & 2*.

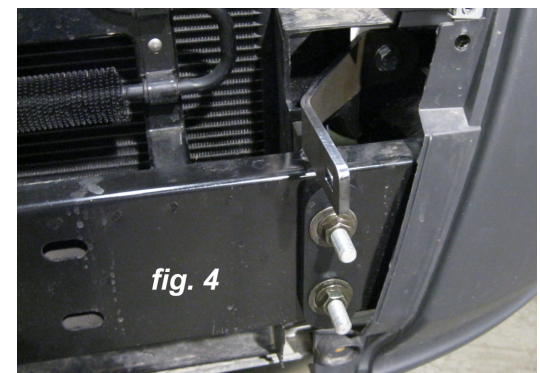
5. REMOVE THE 10mm BOLTS AS SHOWN IN *fig. 3* ON BOTH SIDES OF THE VEHICLE.



6. INSTALL THE LEFT HAND MOUNTING BRACKET BRACE BY INSERTING AN M10 X 1.25 X 40mm BOLT (ITEM #11) AND 3/8" LOCK WASHER (ITEM #21) THROUGH THE HOLE IN THE BRACE (ITEM #4) FOLLOWED BY FOUR 3/8" FLAT WASHERS (ITEM #19), THEN INSTALL THE BOLT IN THE HOLE AND SNUG UP. DO NOT TIGHTEN AT THIS TIME. SEE *fig. 1 & 4*.

7. REPEAT STEP SIX ON THE RIGHT HAND SIDE.

8. INSTALL THE 1/2" FLAT WASHERS (ITEM #17) ON THE BOLTS ATTACHED TO THE FRAME. INSTALL THE MOUNTING BRACKETS ONTO THE BOLTS UP TIGHT AGAINST THE FLAT WASHERS AND MAKE SURE THE 7/16" HOLES IN THE BRACES ALIGN WITH THE 7/16" HOLES IN THE MOUNTING BRACKETS. TIGHTEN THE 10mm BOLTS TO 30 FOOT-POUNDS.

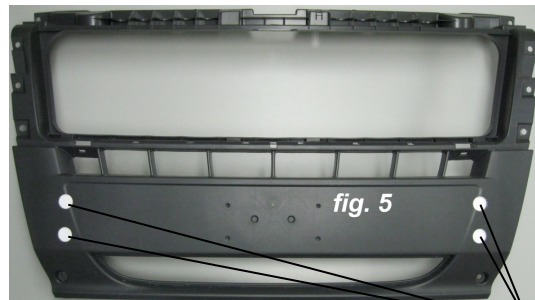


9. REMOVE THE BRACKETS AND FLAT WASHERS.

# LIVERNE

TRUCK EQUIPMENT

10. IN THE MIDDLE OF THE FASCIA, MEASURE DOWN 2" FROM THE END HOLES IN THE AIR INTAKE SLOTS AND MAKE A MARK. USING THE TWO MARKS AS A REFERENCE, ALIGN A TAPE MEASURE ON THESE TWO MARKS AND MEASURE FROM ONE SIDE OF THE FASCIA TO THE OTHER, IT SHOULD BE APPROXIMATELY 40". MARK THE CENTER ON THE FASCIA APPROXIMATELY 20". FROM THE CENTER MEASURE OVER 16-3/8" IN EACH DIRECTION AND MAKE CROSSHAIRS AT THE 2" DOWN MARKS YOU SHOULD HAVE MARKS AT 2" DOWN AND 32-3/4" ON CENTER. FROM THOSE MARKS, MEASURE DOWN 2-1/2" AND MAKE ANOTHER MARK ON EACH SIDE. YOU SHOULD HAVE A RECTANGLE 2-1/2" HIGH AND 32-3/4" LONG WITH THE CROSSHAIRS AT EACH CORNER. SEE *fig. 5*.

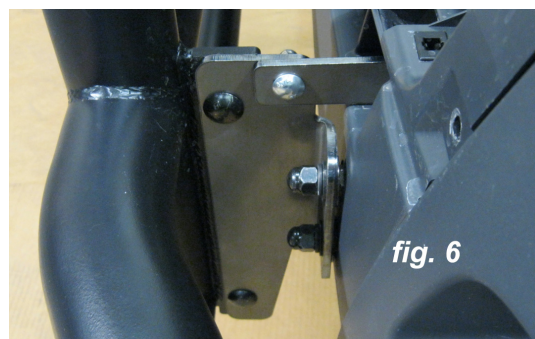


11. USING THE CROSSHAIRS AS THE CENTER POINT, DRILL AT LEAST A 1" DIAMETER HOLE WITH A HOLE SAW AT THE FOUR LOCATIONS. SEE *fig. 5*.

12. REINSTALL THE FASCIA ON THE VEHICLE THEN THE GRILLE.

13. INSTALL THE 1/2" FLAT WASHERS ON THE ENDS OF THE BOLTS ON THE FRAME, THEN INSTALL THE LEFT AND RIGHT MOUNTING BRACKETS AS SHOWN IN FIG. 1. FASTEN WITH THE 1/2" SAE FLAT WASHERS (ITEM #18), 1/2" LOCK WASHERS (ITEM #20) AND 1/2"-13 ACORN NUTS (ITEM #15). DO NOT TIGHTEN AT THIS TIME. SEE *fig. 1 & 6*.

14. INSTALL THE GRILLE GUARD BETWEEN THE BRACKETS AND FASTEN WITH THE 1/2"-13 x 1-1/4" CARRIAGE BOLTS (ITEM #9), 1/2" SAE FLAT WASHERS (ITEM #18), 1/2" LOCK WASHERS (ITEM #20) AND 1/2"-13 ACORN NUTS (ITEM #15). DO NOT TIGHTEN AT THIS TIME. SEE *fig. 1 & 6*.



15. FASTEN THE BRACES (ITEMS #4 & #5) TO THE MOUNTING BRACKETS (ITEMS #2 & #3) WITH THE 3/8"-16 x 1-1/4" CARRIAGE BOLTS (ITEM #10), 3/8" FLAT WASHERS (ITEM #19), 3/8" LOCK WASHERS (ITEM #21) AND 3/8"-16 ACORN NUTS (ITEM #16). DO NOT TIGHTEN AT THIS TIME. SEE *fig. 1 & 6*.

16. PUSH THE GRILLE GUARD TOWARD THE TRUCK TO TAKE UP THE SLACK IN THE HOLES AND TIGHTEN THE 1/2" ACORN NUTS (ITEM #15) ON THE BOLTS THAT FASTEN THE GUARD TO THE BRACKETS TO 65 FOOT-POUNDS.

17. CHECK THAT THE GRILLE GUARD BRACKETS ARE CENTERED ON THE FRAME BOLTS, AND TIGHTEN THE 1/2" ACORN NUTS (ITEM #15) ON THE BOLTS THAT FASTEN THE BRACKETS TO THE FRAME BOLTS TO 65 FOOT-POUNDS.

18. TIGHTEN THE 3/8"-16 ACORN NUTS (ITEM #16) ON THE BRACE BOLTS TO 18 FOOT-POUNDS.



**SERVICE PARTS LIST**

ITEM	PART NO.	QTY	DESCRIPTION
1	205530	1	GUARD-TUBULAR, 3" BLACK
2	205911	1	MOUNTING BRACKET-LH, BLACK
3	205912	1	MOUNTING BRACKET-RH, BLACK
4	205913	1	MOUNTING BRACKET BRACE-LH, BLACK
5	205914	1	MOUNTING BRACKET BRACE-RH, BLACK
6	205865	1	LICENSE PLATE BRACKET
7	205915	2	MOUNTING BRACKET SPACER
8	109545	4	BOLT – CLIPPED HEAD CARRIAGE, 1/2"-13 X 2", BZP
9	109515	4	BOLT - CARRIAGE – 1/2"-13 X 1-1/4", BZP
10	109546	2	BOLT – CARRIAGE – 3/8"-16 X 1", BZP
11	109547	2	SCREW – HEX HEAD CAP – M10 X 1.25 X 40mm, ZP
12	108023	4	SCREW-SELF TAPPING, 1/4"-20 X 1/2", ZP
13	103778	2	SCREW-DRILL, 1/4" X 3/4", ZP , STL
14	106607	4	NUT – HEX SERRATED FLANGE, 1/2"-13, BZP
15	109510	8	NUT – ACORN, 1/2"-13, BZP
16	101311	2	NUT – ACORN, 3/8"-16, BZP
17	107180	8	WASHER – FLAT, .56 X 1.38 X .109, BZP, SST
18	100940	8	WASHER – FLAT, SAE, 1/2", BZP
19	100383	10	WASHER – FLAT, 3/8", BZP
20	109511	8	WASHER - LOCK, 1/2", BZP
21	102664	4	WASHER - LOCK, 3/8", BZP
22	100170	4	NUT-PLASTIC EXPANDING, 1/4", WHITE
23	100252	1	SERIAL NUMBER DECAL
24	102500	4	TUBE INSERT - 3"

SERVICE PARTS DRAWING

MODEL NO. - 205910/205530

INSERT BOLT  
AND  
ROTATE  
90°

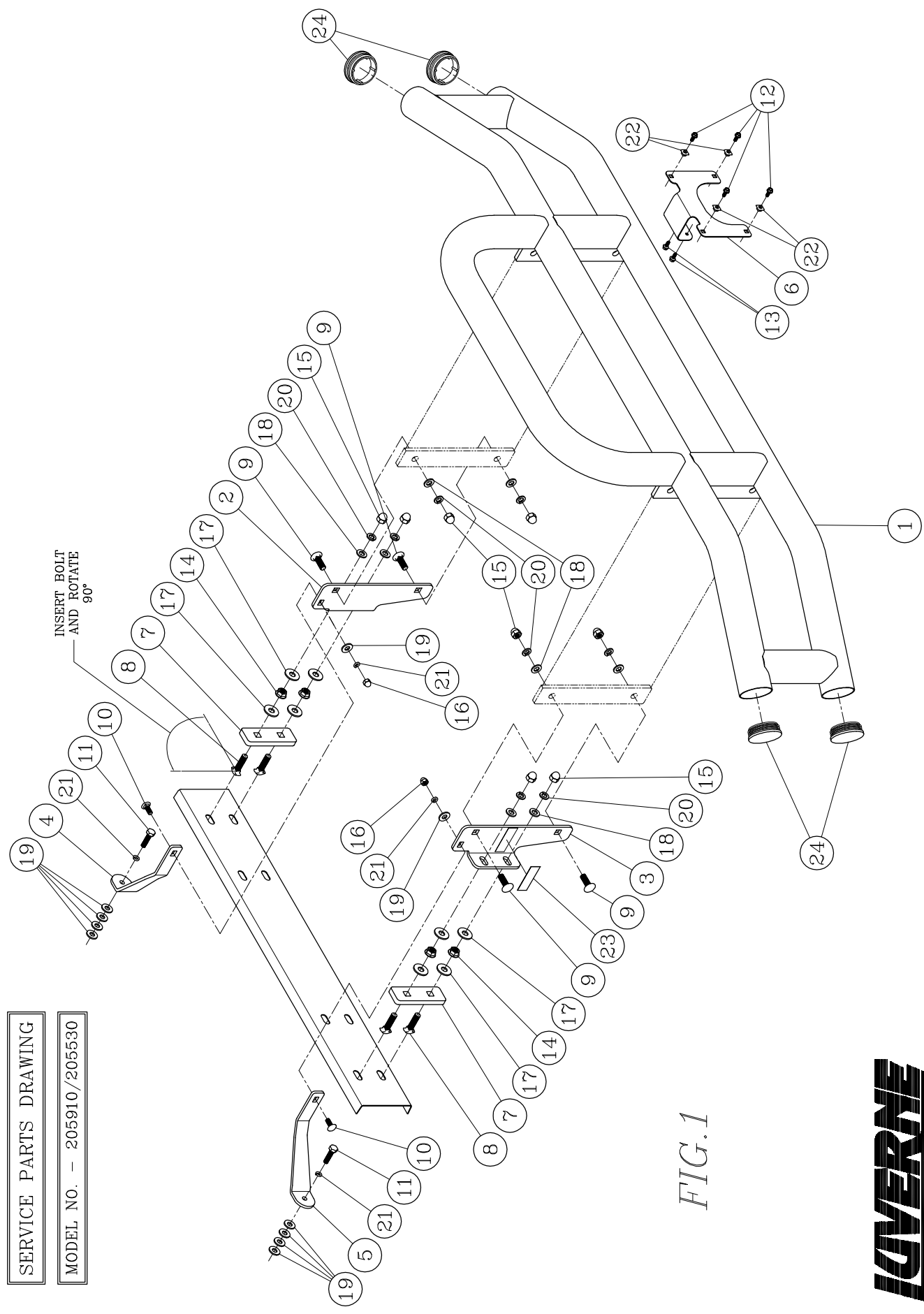


FIG.1

