

# LIVERNE

TRUCK EQUIPMENT

## 205860 SPRINTER VAN 2007-CURRENT

### INSTALLATION INSTRUCTIONS

READ THE INSTRUCTIONS COMPLETELY AND CHECK TO MAKE SURE THAT ALL OF THE REQUIRED PARTS ARE ON HAND BEFORE STARTING THE INSTALLATION.

1. REMOVE FACTORY LICENSE PLATE BRACKET, SHOWN IN FIG.1 AND DISCONNECT WIRE FROM SENSOR.

2. ONCE THE LICENSE PLATE BRACKET IS REMOVED, THERE ARE TWO M8 BOLTS THAT WILL NEED TO BE REMOVED. THERE ARE ALSO TWO 8MM TORX BOLTS IN THE CUTOUT ABOVE THE LICENSE PLATE BRACKET. SHOWN IN FIG. 2

3. PLACE SPACERS (ITEM #10) INTO THE TOP TWO HOLES WHERE YOU REMOVED THE M8-TORX BOLTS.

4. ONCE YOU HAVE THE TWO SPACERS IN PLACE YOU ARE NOW READY TO MOUNT THE BRACKETS (ITEMS #2 AND #3). BEFORE THE BRACKETS GET MOUNTED PLACE THE FLAT HEAD M8 BOLTS (ITEM #8) INTO THEIR SUGGESTED HOLES. ONCE THESE ARE IN PLACE THERE ARE TWO SPACERS (ITEM #11) THAT SHOULD BE PLACED ON THE BACK SIDE OF THE M8 FLAT HEAD BOLTS. THEN PLACE THE BRACKET INTO PLACE AND SECURELY FASTEN THEM DOWN USING THE SUPPLIED HARDWARE (ITEM #9,12,13), TORQUEING THEM DOWN TO 19 FT LBS.

5. REINSTALL THE LICENSE PLATE BRACKET SHOWN IN FIG. 1. YOU WILL NEED TO CUT TWO NOTCHES OUT OF THE TOP EDGE OF THE PLASTIC STARTING AT 2" FROM BOTH SIDES AND CUT THROUGH TO 4.5" FROM BOTH SIDES. CUTTING THESE NOTCHES OUT WILL LET THE ORIGINAL LICENCE PLATE BRACKET TO LAY FLAT IN THE FACTORY POSITION. ALSO MAKE SURE PLUG THE SENSOR WIRE BACK INTO THE SENSOR.

6. BEFORE YOU MOUNT THE TUFF GUARD INTO PLACE, DEPENDING ON YOUR STATE THERE IS A OPTIONAL LICENSE PLATE BRACKET (ITEM # 4) THAT WILL NEED TO BE INSTALLED ON THE LOWER TUBE, USING THE TWO SELF DRILLING SCREWS (ITEM #7).

9. FASTEN THE TUFF GUARD TO THE BRACKETS INSTALLED ON THE TRUCK WITH THE SUPPLIED FASTENERS (ITEM #14,15,16). TIGHTEN THE BOLTS DOWN TO 75 FT LBS.





<b>SERVICE PARTS LIST</b>
---------------------------

ITEM	PART NO.	QTY	DESCRIPTION
1	205530	1	GUARD-TUBULAR,3" BLACK
2	205861	1	MOUNTING BRACKET-LH, BLACK
3	205862	1	MOUNTING BRACKET-RH, BLACK
4	205865	1	LICENSE PLATE BRACKET
5	100170	4	NUT-PLASTIC EXPANDING,1/4, WHITE
6	108023	4	SCREW-SELF TAPPING, 1/4-20 X 1/2, ZP
7	103778	2	SCREW-DRILL, 1/4 X 3/4, ZP , STL
8	109481	2	FLAT HEAD CAP SCREW, M8-35, ZP
9	109482	2	SCREW-HEX HEAD, M8-40, ZP
10	109483	2	SPACER-3/4OD, 1/2ID, 1/2 WIDTH
11	109484	2	SPACER-1-1/8OD, 1/2ID, 1/2 WIDTH
12	100030	2	WASHER-LOCK, 5/16, ZP
13	100034	2	WASHER-FLAT, 5/16, ZP
14	105654	4	NUT-NYLOCK, 1/2-13, ZP
15	100088	4	SCREW-HEX HEAD, 1/2-13 X 1-1/2. ZP
16	100118	8	WASHER-FLAT, 1/2, ZP
17	100252	1	SERIAL NUMBER DECAL
18	102500	4	TUBE INSERT-3"

SERVICE PARTS DRAWING

MODEL NO. - 205530

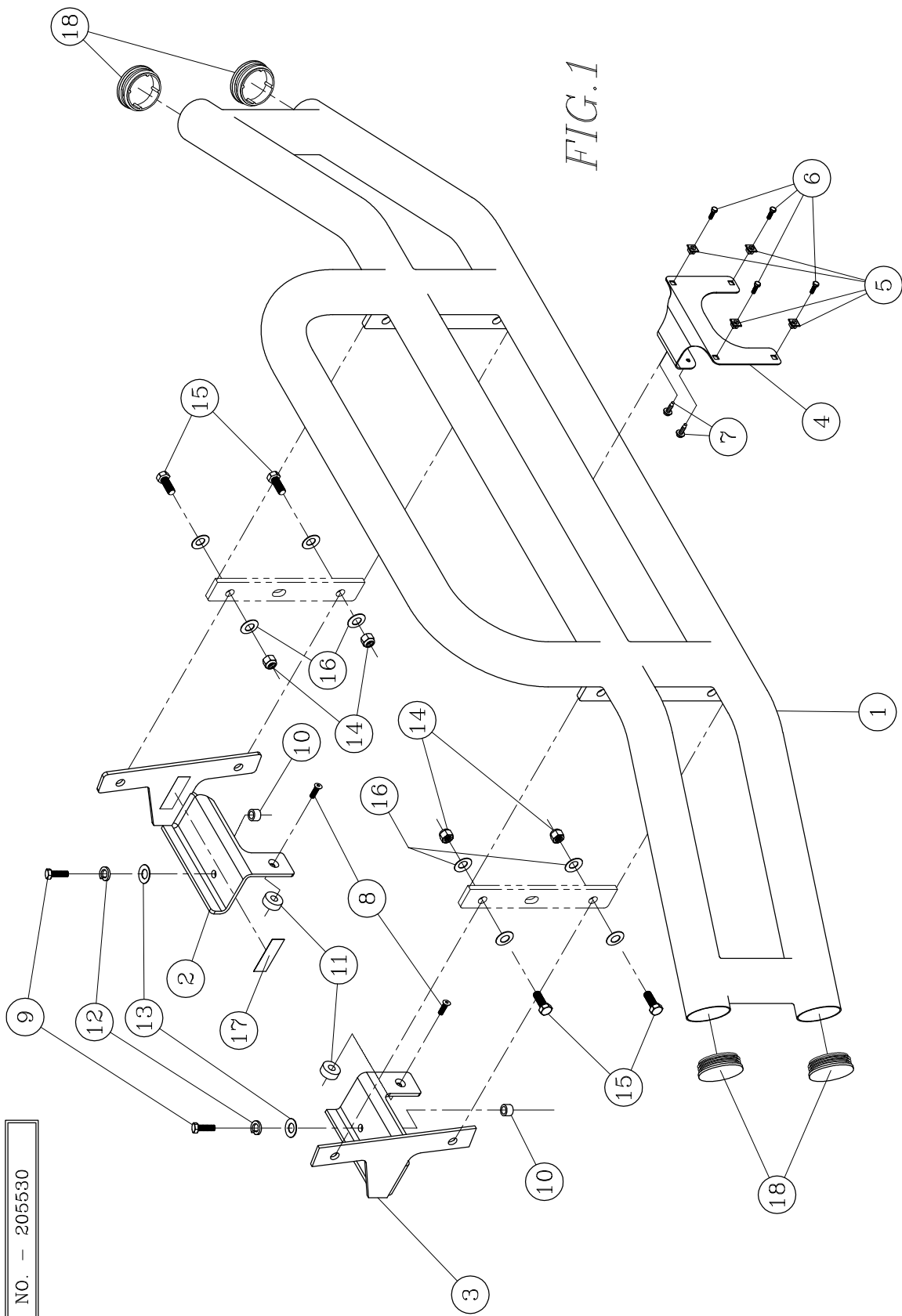


FIG. 1

