

INSTALLATION MANUAL

P2070

Level of Difficulty

Difficult

Installation difficulty levels are based on time and effort involved and may vary depending on the installer level of expertise, condition of the vehicle and proper tools and equipment.

Parts List

| Qty | Description |
|-----|-------------------------------------|
| 1 | Grille guard |
| 1 | Mounting bracket, driver-side |
| 1 | Mounting bracket, passenger-side |
| 1 | Support bracket, driver-side |
| 1 | Support bracket, passenger-side |
| 10 | Lock washer, 10mm |
| 6 | Hex bolt, 10 - 1.5mm x 35mm |
| 18 | Flat washer, 10mm |
| 10 | Hex nut, 10mm |
| 2 | Bolt plate, 10-1.5mm x 35mm |
| 2 | PVC clip |
| 2 | Button-head bolt, 10 - 1.5mm x 35mm |
| 2 | Clip nut, 8mm |
| 2 | Lock washer, 8mm |
| 2 | Flat washer, 8mm |
| 2 | Hex bolt, 8mm x 25mm |

Tools Required

| | |
|--------------|-------------------|
| Ratchet | Socket extensions |
| Socket, 15mm | Metric wrenches |

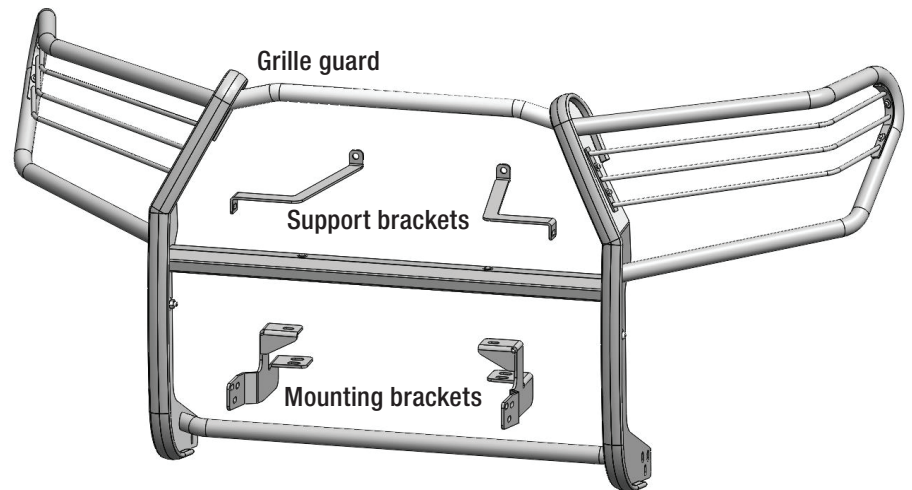
Product Registration and Warranty

ARIES stands behind our products with industry-leading warranties. To get copies of the product warranties, register your purchase or provide feedback, visit: warranty.curtgroup.com/surveys

Product Photo



Mounting Hardware



Maintenance

Mild automotive detergent may be used to clean the product. Do not use dish detergent, abrasive cleaners, abrasive pads, wire brushes or other similar products that may damage the finish.

Step 1

Select an LED light, mounting hardware and brackets (sold separately). Attach the hardware to the support flange.

Note: LED manufactures may have different mounting styles or brackets. Once the mounting option is determined, attach it to the support flange.



Step 2

With the LED light attached to the support flange, place a clip nut on both ends of the support flange.

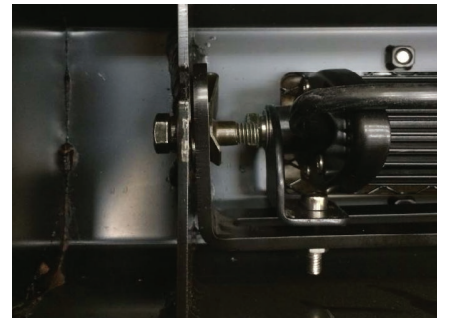
Insert an 8mm hex bolt, lock washer and flat washer into the clip nut. Leave enough space between the flat washer and clip nut to slot the support flange into the light bar cage on the grille guard.



Step 3

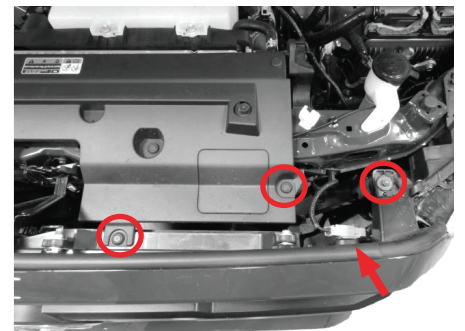
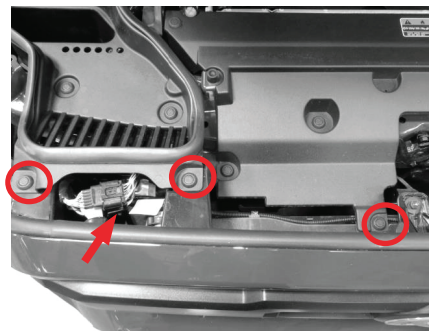
Place the grille guard face down on a flat, stable work surface.

Insert the support flange into the light bar cage on the grille guard and ensure the flat washer, lock washer and head of the hex bolt are on the outside of the center flange.



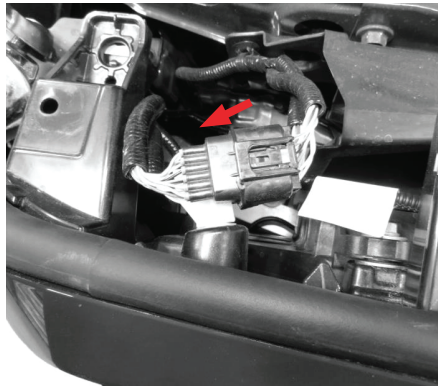
Step 4

To remove the front bumper from the vehicle, remove the 8 fasteners holding the front bumper to vehicle.



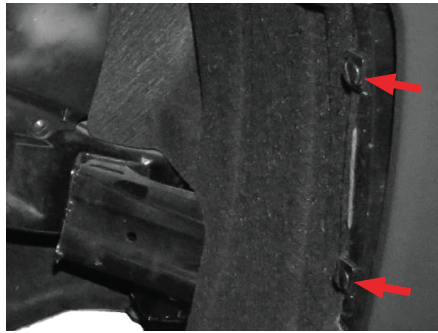
Step 5

Unplug wire harness.



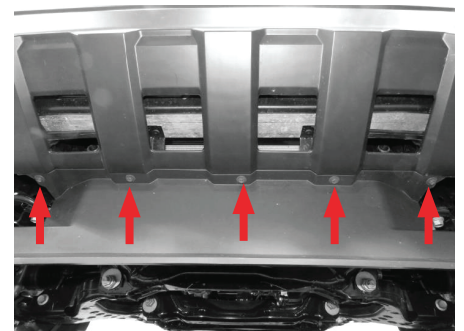
Step 6

Remove clips and peel wheel well liner from vehicle.



Step 7

Remove hardware on side of vehicle, and underneath bumper, to remove front bumper.



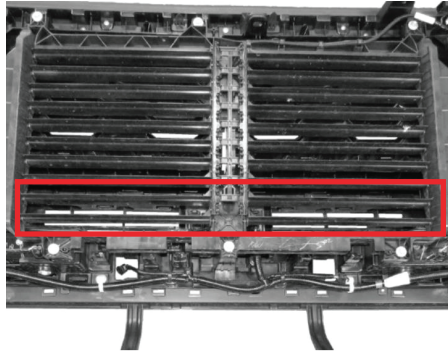
Step 8

Pull bumper from sides and forward to detach from vehicle.



Step 9

Remove bottom two shutter veins from front clip, then reattach front bumper to vehicle.

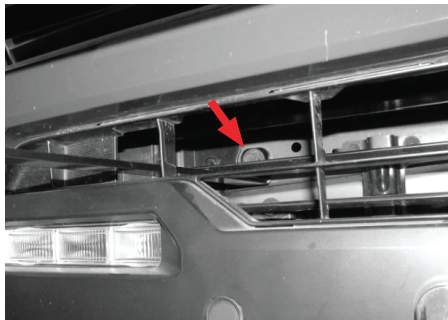
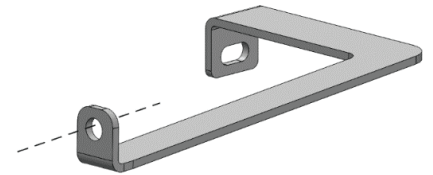
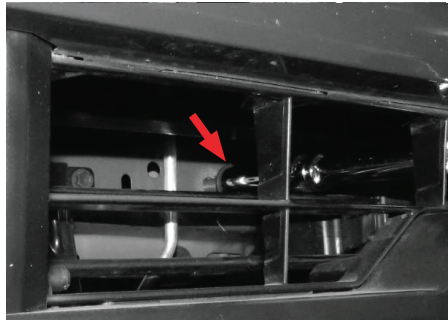


Step 10

To attach support brackets, remove the hardware from behind the grille.

Attach support bracket reusing hardware.

Repeat process on the other side.

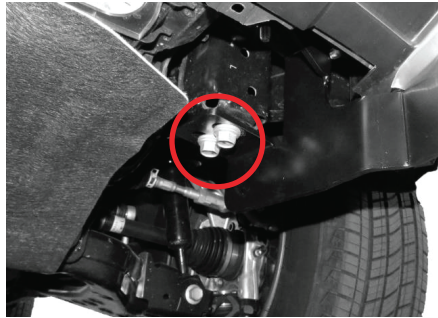
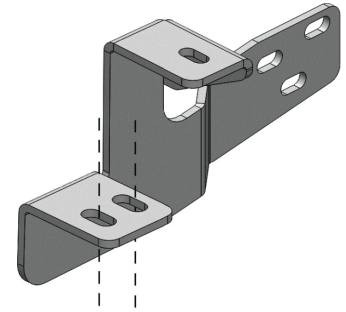
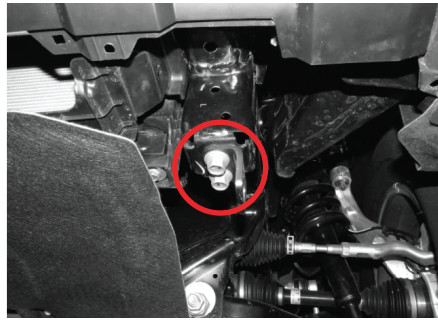
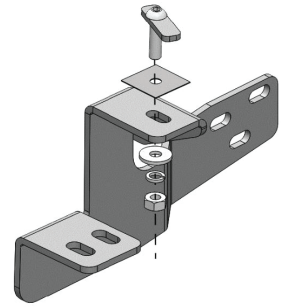
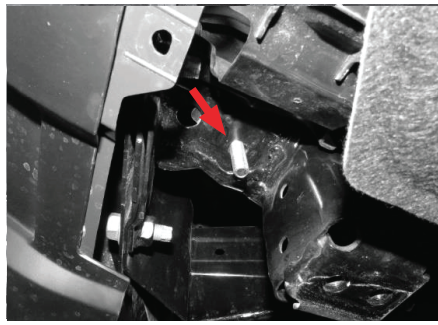


Step 11

To attach the frame mounting brackets, place the bolt plate in the upper frame mounting point and attach the mounting bracket with one 10mm bolt plate, one plastic retainer, one 10mm flat washer, one 10mm lock nut, and one 10mm hex nut.

Remove hardware from lower frame mounting bracket mounting point, and attach the frame mounting bracket reusing hardware.

Repeat process on the other side.

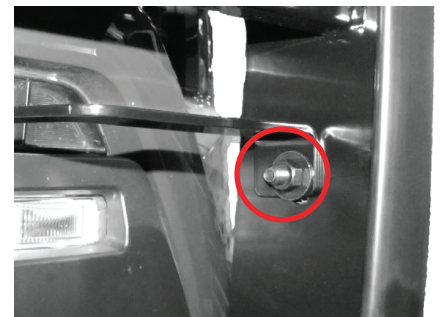
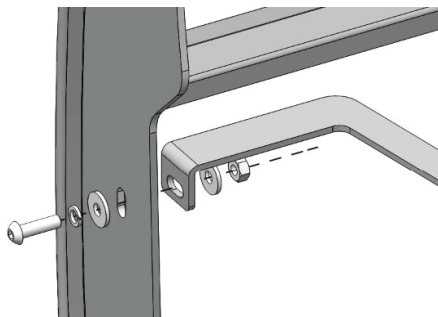
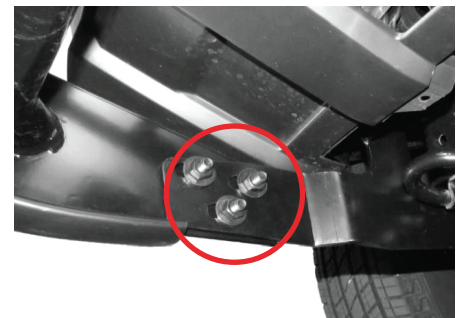
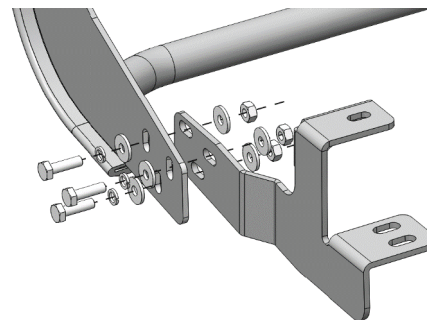


Step 12

Attach the grille guard to the bottom frame mounting brackets with three 10mm bolt plates, three 10mm lock washers, six 10mm flat washers, and three 10mm hex nuts.

Attach the support brackets with one 10mm button head bolt, one 10mm lock washer, two 10mm flat washers, and one 10mm hex nut.

Repeat the process on both sides.



Final Installed Image

