



INSTALLATION MANUAL

P204048

Parts List

1	Driver / left side bar
1	Passenger / right side bar
4	Mounting bracket, universal
9	Clip nut, M8
9	Hex bolt, M8 x 25mm
9	Flat washer, M8
9	Lock washer, M8
9	Hex bolt, M10
11	Flat washer, M10
10	Lock washer, M10
1	Bolt plate, M10
2	Hex nut, M10
1	Plastic bolt retainer
1	Def-tank L-bracket
1	Def-tank support bracket

Tools Required

Ratchet	Socket, 16mm
Wrench, 16mm	Socket, 13mm
Level	

Torque Specifications

METRIC	M6 bolt	3 ft.-lbs.
	M8 bolt	7 ft.-lbs.
	M10 bolt	16 ft.-lbs.
	M12 bolt	28 ft.-lbs.
SAE	1/4" bolt	3 ft.-lbs.
	5/16" bolt	7 ft.-lbs.
	3/8" bolt	16 ft.-lbs.
	7/16" bolt	20 ft.-lbs.
	1/2" bolt	28 ft.-lbs.

Level of Difficulty

Easy



Scan
for helpful
install tips

Product Image



Notes and Maintenance

Before you begin installation, read all instructions thoroughly.

Proper tools will improve the quality of installation and reduce the time required.

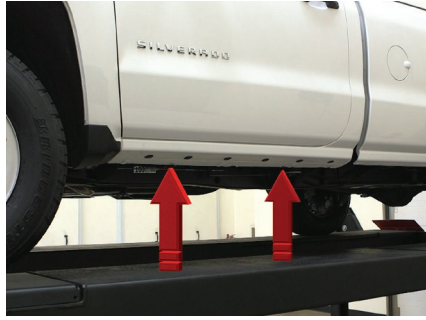
To protect the product, wax after installing. Regular waxing is recommended to add a protective layer over the finish. Do not use any type of polish or wax that may contain abrasives that could damage the finish.

For gloss black finishes, mild soap may be used to clean the product.

Always start threaded fasteners by hand and finish tightening with a wrench. Do not use an impact driver as this may result in cross-threading and cause damage to the side bar.

Step 1

Starting on the driver side, locate the two mounting locations underneath the vehicle.



Step 2

At the front driver-side mounting tab, locate the threaded hole on the inside of the body panel.

Place a mounting bracket onto the vehicle and secure with an M8 hex bolt, M8 lock washer and M8 flat washer.

Snug the hardware, but do not fully tighten.



Step 3

Rotate the bottom of the bracket to the side to expose the hole in the mounting tab.

Slide an M8 clip nut over the mounting tab and rotate the bracket back into position. Finish securing the bracket with an M8 hex bolt, M8 lock washer and M8 flat washer.

Snug the hardware, but do not fully tighten.



Step 4

Repeat steps 2 and 3 to install the rear mounting bracket.



Step 5

Place the side bar onto the mounting brackets and align the mounting points.

Secure the side bar to the brackets using a M10 hex bolt, lock washer and flat washer at each mounting location.

Snug the hardware, but do not fully tighten.



Step 6

Adjust and level the side bar.

With the side bar in position, it is recommended to tighten all brackets to the vehicle first, followed by the side bar connections.



Step 7

Repeat steps 1 through 6 on the passenger side.

Note: For diesel trucks, the front bracket on the passenger side will require the included def-tank brackets. Follow steps 8 through 13 to complete the install.



Step 8

2014 or older

2015 or newer

Locate the def-tank bracket components for diesel truck models.

Begin the install by locating the round factory hole in the bottom of the rocker panel, closest to the front bracket mounting location. The installation of the bracket will vary depending on the vehicle model shown to the right.

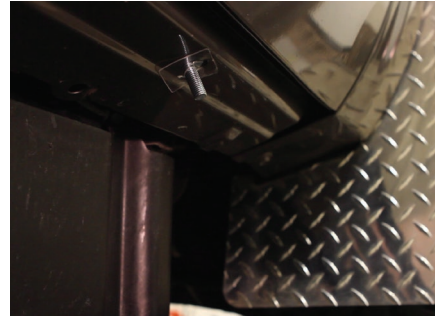
Remove the plastic plug to expose the mounting hole in the rocker panel.



Step 9

Insert the M10 bolt plate into the access hole in the rocker panel.

Push the plastic retainer onto the threaded end of the bolt plate to help hold the plate in position.



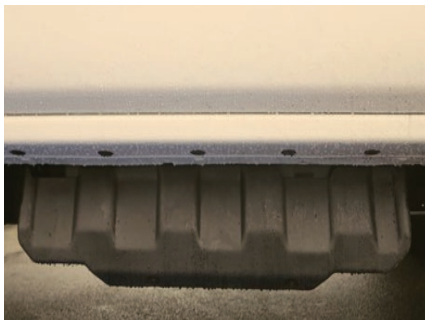
Step 10

Select the def-tank L-bracket.

Attach the short end of the bracket to the bolt plate with the flat washer, lock washer and M10 hex nut.

Snug the hardware, but do not fully tighten.

Note: On 2017 models, the DEF tank shield will need to be removed and trimmed before reinstallation.



Step 11

Slide an M8 clip nut onto the mounting tab. Fasten the side bar mounting bracket with an M8 hex bolt, flat washer and lock washer.

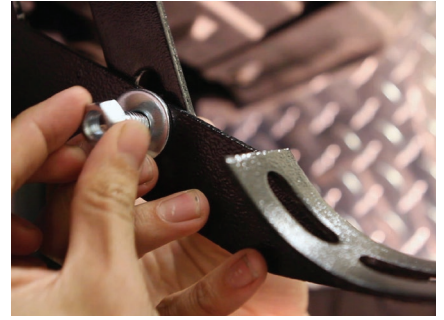
Snug the hardware, but do not fully tighten.



Step 12

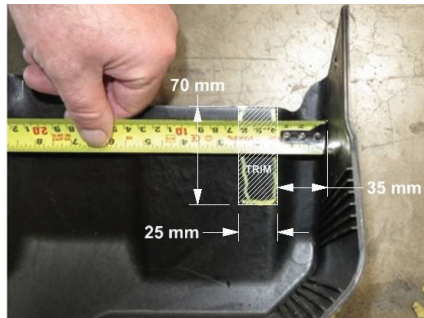
Bolt the def-tank support bracket to the back of the def-tank L-bracket using a M10 hex bolt, flat washer and lock washer.

Snug the hardware, but do not fully tighten.



Step 13

For 2017 diesel models only: Trim DEF tank shield as needed and reinstall.



Step 14

Repeat steps 5 and 6 on the passenger side of the vehicle.

Congratulations on the installation of your new ARIES 4" oval side bars.

With the side bars installed, periodic inspections should be performed to ensure all mounting hardware remains tight.

To protect your investment, see the 'Notes and Maintenance' section on the first page of this instruction manual.

