

Parts List

1	Driver / left side bar
1	Passenger / right side bar
4	Mounting bracket, universal
1	Passenger / right, front upper bracket
1	Passenger / right, front lower bracket
10	Clip nut, M8
22	Hex bolt, M8
22	Flat washer, M8
22	Lock washer, M8
2	Hex bolt, M10
2	Flat washer, M10
2	Lock washer, M10

Tools Required

Ratchet	Socket, 16mm
Wrench, 16mm	Socket, 13mm
Level	

Torque Specifications

METRIC		
M6 bolt		3 ft.-lbs.
M8 bolt		7 ft.-lbs.
M10 bolt		16 ft.-lbs.
M12 bolt		28 ft.-lbs.
SAE		
1/4" bolt		3 ft.-lbs.
5/16" bolt		7 ft.-lbs.
3/8" bolt		16 ft.-lbs.
7/16" bolt		20 ft.-lbs.
1/2" bolt		28 ft.-lbs.

Use above torque setting unless otherwise noted

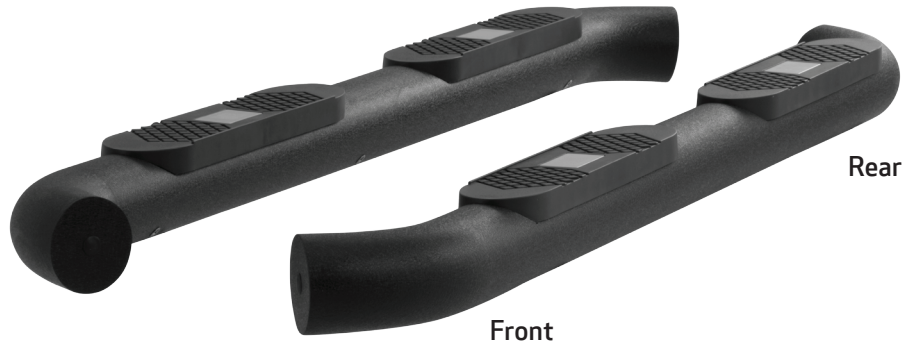
Level of Difficulty

Easy



Scan for helpful install tips

Product Image



Notes and Maintenance

Before you begin installation, read all instructions thoroughly.

Proper tools will improve the quality of installation and reduce the time required.

To protect the product, wax after installing. Regular waxing is recommended to add a protective layer over the finish. Do not use any type of polish or wax that may contain abrasives that could damage the finish.

For polished, gloss and other smooth finishes, polish may be used to clear small scratches and scuffs on the finish.

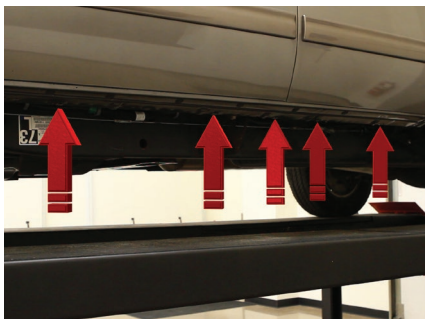
Mild automotive detergent may be used to clean the product. Do not use dish detergent, abrasive cleaners, abrasive pads, wire brushes or other similar products that may damage the finish.

Refer to the table to the left when securing hardware during the installation process to help prevent damage to the product or vehicle.

Step 1

Locate the five mounting tabs along the bottom edge of the vehicle body.

This installation will use the first, third and fifth mounting tabs.



Step 2

Starting at the front driver side mounting location, locate the threaded hole on the inside of the body panel.

Attach a universal mounting bracket to the body panel using an M8 hex bolt with a lock and flat washer.

Snug the hardware, but do not fully tighten



Step 3

Rotate the bottom of the bracket to the side to expose the hole in the mounting tab.

Slide an M8 clip-nut over the mounting tab and rotate the bracket back into position.

Secure the bracket with a second M8 hex bolt, lock washer and flat washer.

Snug the hardware, but do not fully tighten



Step 4

Repeat steps 2 and 3 to install the second bracket over the third mounting tab location from step 1.



Step 5

Locate the fifth mounting tab from step 1 and remove the rubber plug from the access hole.

Insert a clip nut through the access hole and align it over the adjacent small hole.

Secure the top of the bracket with an M8 hex bolt, lock washer and flat washer.

Repeat step 3 to secure the bottom of the bracket.



Step 6

Place the side bar onto the mounting brackets and align the mounting points.

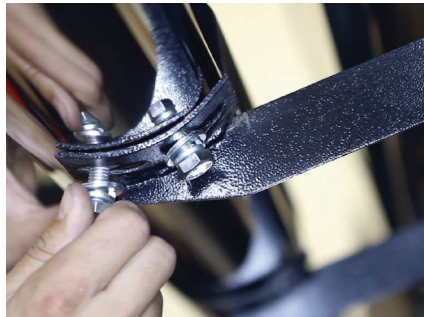
Note: If the holes on the side bar do not match up with the brackets, ensure all brackets have been installed in the correct locations and the correct side bar is being used.



Step 7

Secure the side bar to the brackets using an M10 hex bolt, lock washer and flat washer at each mounting location.

Snug the hardware, but do not fully tighten.



Step 8

Adjust and level the side bar.

With the side bar in position, it is recommended to tighten all brackets to the vehicle first, followed by the side bar connections.



Step 9

Locate the front mounting point on the passenger side of the vehicle to install the front two passenger mounting brackets.

Note: If there is a Def tank you will not be able to insert the M8 hardware on front upper bracket.

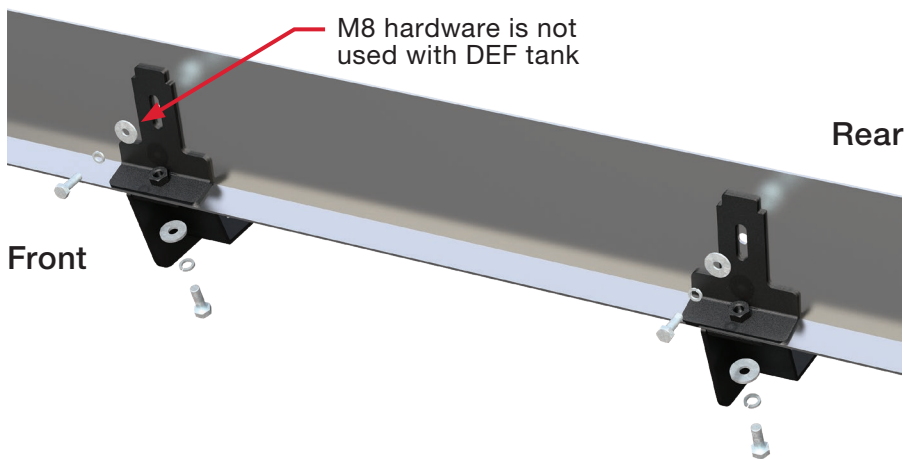
Place the upper mounting bracket against the rocker panel. Align the weld nut on the upper mounting bracket with the mounting hole in the rocker panel. Secure the top mounting bracket to the rocker panel using an M8 hex bolt, M8 lock washer and M8 flat washer.

Align one of the passenger front lower mounting brackets with the upper mounting bracket. Secure the two mounting brackets together using an M10 hex bolt, M10 lock washer and M10 flat washer.

Torque all M10 hardware to 31.6 ft-lbs.

Repeat this process to install the second passenger mounting bracket.

Snug the hardware, but do not fully tighten.



Step 10

Repeat steps 5 through 8 on the passenger side for the remaining brackets and side bar.



Step 11

With the side bars installed, periodic inspections should be performed to ensure all mounting hardware remains tight.

Congratulations on the installation of your new ARIES 4" Big Step™ side bars.

To protect your investment, see the 'Notes and Maintenance' section on the first page of this instruction manual.

