

INSTALLATION INSTRUCTIONS

2012-2013 HONDA PILOT
PART # 6056 / 6056-2

PARTS LIST:

Qty	Description	Qty	Description
1	Grille Guard	4	12mm Lock Washers
1	Driver/Left Frame Mounting Bracket	6	12mm Lock Nuts
1	Passenger/Right Frame Mounting Bracket	2	6mm x 25mm Philips Pan Head Bolt
1	Driver/Left Upper brace bracket	4	6mm x 17mm OD x 1.5mm Flat Washer
1	Passenger/Right Upper brace bracket	2	6mm Lock Washers
1	Driver/Left Top Mounting Bracket	2	6mm Hex Nuts
1	Passenger/Right Top Mounting Bracket	2	8-1.25mm x 20mm Hex Bolts
6	12mm x 35mm Hex Bolts	2	8mm x 24mm OD x 2mm Flat Washers
16	12mm x 32mm OD x 3mm Flat Washers	2	8mm Lock Washers
4	12-1.25mm x 40mm Hex Bolts		

Passenger/right side Top Mounting Bracket



Passenger/right side Upper brace Bracket



Driver/left side Top Mounting Bracket



Driver/left side Upper brace Bracket



Passenger/right side Frame Mounting Bracket



Driver/left side Frame Mounting Bracket



PROCEDURE:

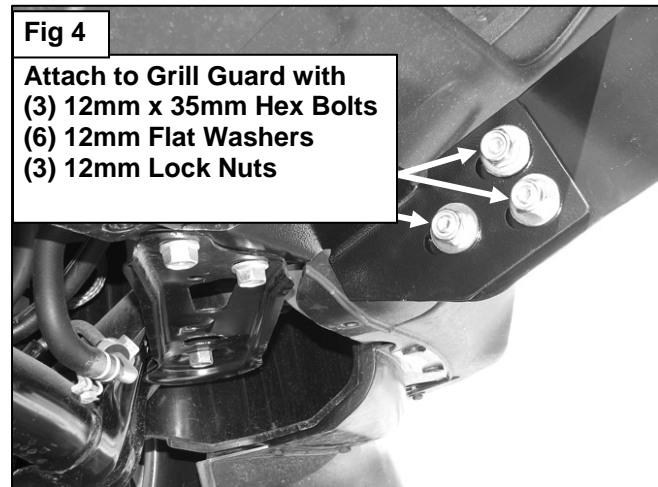
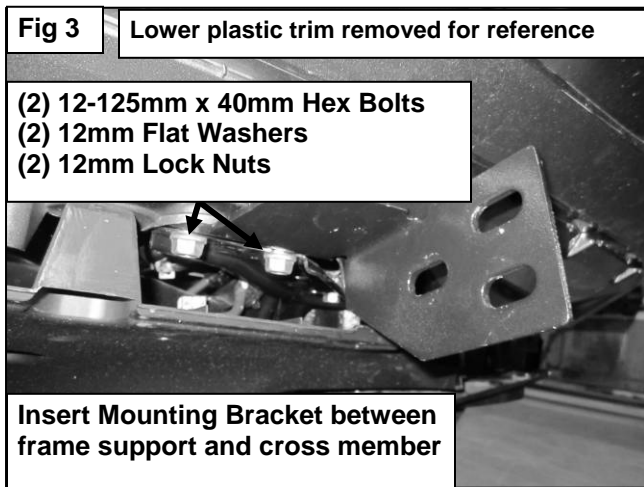
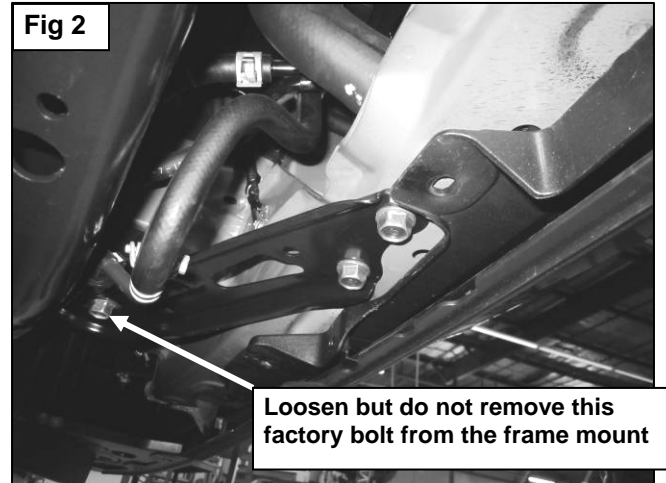
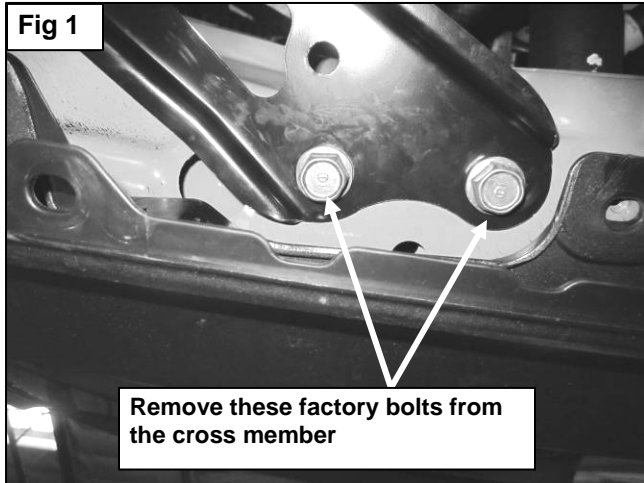
- 1. REMOVE CONTENTS FROM BOX. VERIFY ALL PARTS ARE PRESENT. READ INSTRUCTIONS CAREFULLY. ASSISTANCE IS RECOMMENDED. CUTTING IS REQUIRED.**
2. Starting under the front bumper, carefully remove the center plastic splash guard, **NOTE:** Depending on the year and model of vehicle, there may be several two-piece plastic push-in clips holding the splash guard up to the vehicle. Pry the center pin of the clip up with a small flat blade screwdriver to release and remove the entire clip. Pay close attention to the type and location of all factory hardware for reinstallation. Remove the splash guard after all clips have been removed.
3. Once splash guard has been removed, starting on the Driver side of the vehicle, locate and remove the two factory bolts securing the frame bracket to the front cross member (these will not be reused). As seen in **(Fig 1)** Once done loosen the rear hex bolt securing the frame bracket to the suspension, **(NOTE: 1-2 full turns only)**, as seen in **(Fig 2)**. Select the Driver side bracket from the list above & place it over top of the frame bracket and line up the 2 holes of the bracket to the cross member holes, once done mark out the plastic trim as you will need to create a slit in the plastic where the bracket needs to go through the lower plastic trim of the bumper. **(Fig 3)** shows bracket attached with out the plastic trim for reference.
4. Now gently pull down on the bracket just enough to slide the driver side Mounting Bracket through the slit you just created & place it between the frame bracket and the cross member, **(Fig 3)** shows bracket attached. **NOTE:** Do not pull too hard or you may bend the frame bracket. If more room is required to insert the Mounting Bracket, loosen but **do not remove** the hex bolt at the end of the frame bracket. Align the mounting holes in the Mounting Bracket with the holes in the frame bracket and secure it with the supplied (2) 12mm-1.25mm x 40mm Hex Bolts, (2) 12mm Flat Washers & (2) 12mm Lock Washers. Snug but do not tighten all hardware at this time.
5. Repeat step 3 & 4 for the passenger side lower Mounting Bracket installation.
6. With assistance, mount the Grille Guard to the outside of the Mounting Brackets. Use the included (6) 12-1.75mm x 35mm Hex Bolts, (12) 12mm Flat Washers, and (6) 12mm Lock Nuts to attach the Grille Guard to both mounting brackets, as seen in **(Fig 4)**. Snug but do not tighten hardware at this time.
7. Next, open the front hood of vehicle & remove the plastic cover between the radiator support and the plastic grille, **(Fig 5)** shows 9 push pins to be removed. With the plastic cover removed locate and remove the top driver side radiator mount, **(Fig 6)**. Carefully remove the rubber bushing from the mount and insert it into the new Driver side Top Mounting Bracket, **(Figure 6A)**. Repeat this step to install the passenger side Top Mounting Bracket. Secure the new radiator support bracket into place as seen in **(Fig 7)** Repeat step for Passenger side.
8. Insert the driver side Upper Brace Bracket through the opening in the plastic grill; see in **(Fig 8)**. Attach the Upper Brace Bracket to the radiator bracket with (1) 8mm Hex Bolt, (1) 8mm Flat Washer & (1) 8mm Lock washer Snug but do not tighten at this time. As seen in **(Fig 9)**. Repeat this step for the passenger side next secure the upper brace bracket to the grill guard using (1) 6mm Philips Pan Head bolt, (2) 6mm Flat Washers, (1) 6mm Lock washer & (1) 6mm Hex Nut as seen in **(Fig 10)** Snug but do not tighten at this time. Repeat this step for Passenger side.
9. Next adjust & level the grill guard, tighten all hardware. Re-attach the plastic grille and reinstall the plastic cover between the radiator support and the plastic grille. Re-install the lower splash guard using the factory hardware.
10. Do periodic inspections to the installation to make sure that all hardware is secure and tight.

To protect your investment, wax this product after installing. Regular waxing is recommended to add a protective layer over the finish. Do not use any type of polish or wax that may contain abrasives that could damage the finish.

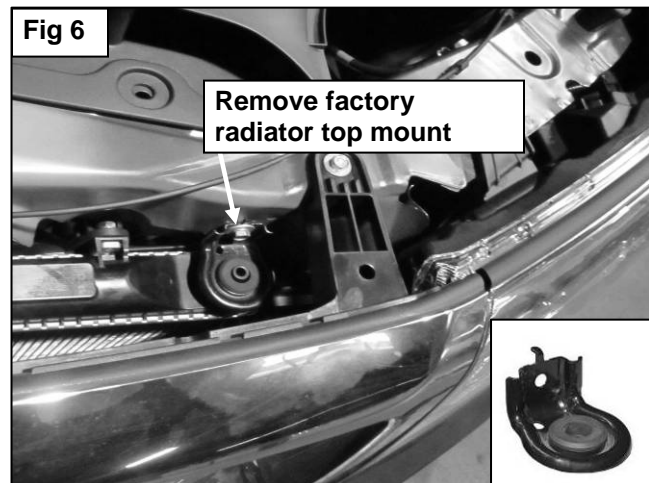
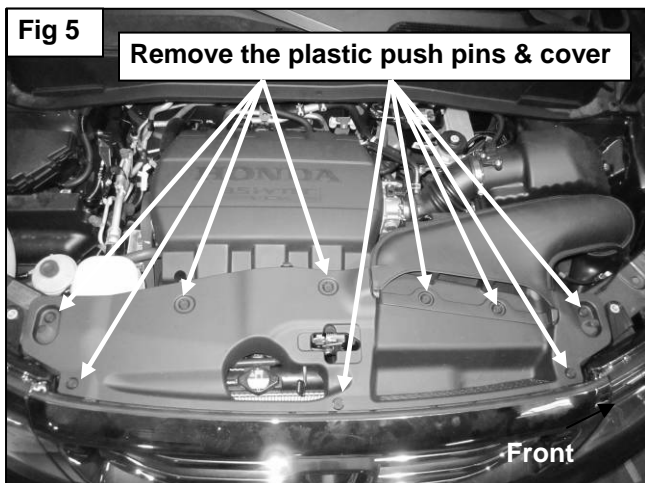
For stainless steel: Aluminum polish may be used to polish small scratches and scuffs on the finish. Mild soap may be used also to clean the Grille Guard.

For gloss black finishes: Mild soap may be used to clean the Grille Guard.

DRIVER SIDE INSTALLATION PICTURED



DRIVER SIDE INSTALLATION PICTURED



DRIVER SIDE INSTALLATION PICTURED

