



# 4508 WITH 6" OVAL INSTALLATION MANUAL

## Parts List

2	6" oval side bar
6	Universal bracket, #4508
6	Stainless steel bolt plate
24	Flat washer, M6
24	Nylock nut, M6 x 1, CL8.8
18	Flat washer, M8
18	Flat washer, M8 nylon
18	Nylock nut, M8 x 1.25, CL8.8

## Additional Hardware\*

24	T-bolt, M8 x 1.25, 25, CL8.8
24	Flat washer, M8
24	Lock washer, M8
24	Hex nut, M8 x 1, CL8.8

\* Aluminum boards are supplied with additional hardware. Quantities listed are in addition to the standard supplied hardware

## Tools Required

Ratchet	Socket, 10mm
Level	Socket, 14mm



## Level of Difficulty

Easy



Scan for helpful install tips

## Product Image



## Notes and Maintenance

Before you begin installation, read all instructions thoroughly.

Proper tools will improve the quality of installation and reduce the time required.

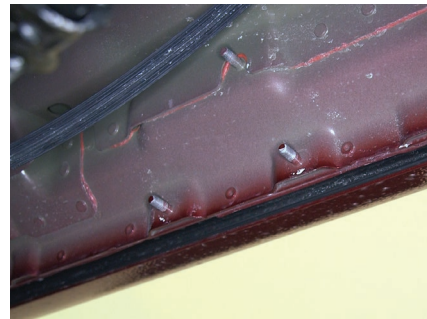
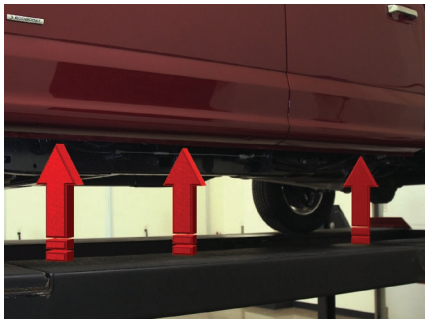
To protect the product, wax after installing. Regular waxing is recommended to add a protective layer over the finish. Do not use any type of polish or wax that may contain abrasives that could damage the finish.

For stainless steel and aluminum, polish may be used to clear small scratches and scuffs on the finish. Mild soap may be used also to clean the product.

### Step 1

Starting on the driver side, locate the three mounting locations on the inside of the rocker panel.

There will be three 8mm studs in each location to secure the brackets.



### Step 2

Locate the six mounting brackets in the 4508 kit.

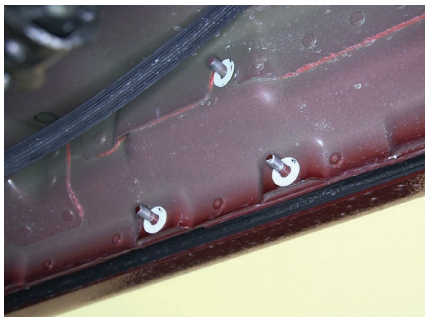
The mounting brackets are universal, and three will fit on both the driver and passenger sides.



### Step 3

Starting at the front, place a nylon washer over the factory bolts, followed by the bracket.

Note: It is important to install the nylon washers first to prevent the corrosion effect from the aluminum body and steel bracket.



### Step 4

Add an 8mm flat washer and secure with a nylock nut. Snug the hardware with a 14mm socket.

Do not fully tighten the hardware at this time.



### Step 5

Repeat steps 3 and 4 to install the middle and rear brackets on the driver side mounting locations.

Again, do not fully tighten any of the hardware to allow for adjustments to the side bar.



### Step 6

Carefully place the side bar onto the brackets, with the larger step pad towards the front.

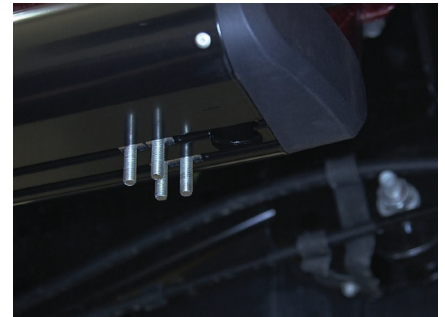


### Step 7 - Option 1, for aluminum boards

Insert four T-bolts into the bottom channels of the side bar as shown.

Slide the bolts forward to the front-most bracket and insert them through the cradle.

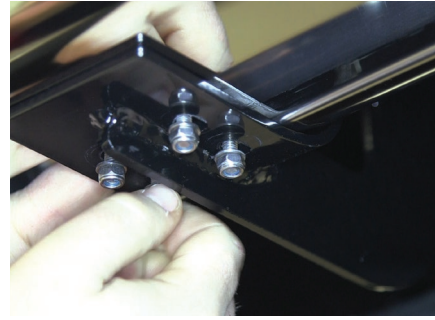
Repeat this for each bracket and attach with 8mm flat washer, 8mm lock washer and nut. Snug the hardware, but do not over tighten to allow for adjustments.



### Step 7 - Option 2, for stainless steel boards

Insert the bolt plate into the bottom channel of the side bar, and attach with a 6mm flat washer and nylock nut.

Snug the hardware with a 10mm socket. To allow for adjustments, do not over tighten.



### Step 8

Adjust the side bars into the desired location. Check that it is level and adjust if necessary.

With the side bar in the desired position, fully tighten all hardware from the previous steps.



### Step 9

Repeat steps 1 through 8 on the passenger side.



### Step 10

With the side bars installed, periodic inspections should be performed to ensure all mounting hardware remains tight.

To protect your investment, we recommend you apply a layer of nonabrasive wax.

Congratulations on the installation of your brand new ARIES 6" oval side bars.

