

### Parts List

2	6" oval side bar
6	Universal bracket, #4500
6	Bolt plate with nut
6	Bolt plate, stainless steel
24	Flat washer, M6
24	Nylock nut, M6 x 1 - CL8.8
6	Lock washer, M10
6	Flat washer, M10
6	Hex bolt, M10
6	Lock washer, M12
6	Flat washer, M12
6	Hex nut, M12
6	Plastic bolt retainer

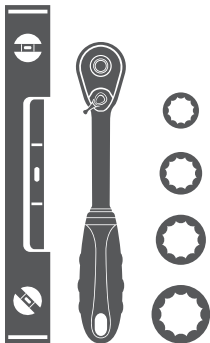
### Additional Hardware\*

24	T-bolt, M8 x 1.25 - 25mm, CL8.8
24	Flat washer, M8
24	Lock washer, M8
24	Hex nut, M8 x 1, CL8.8

\* Aluminum boards are supplied with additional hardware. Quantities listed are in addition to the standard supplied hardware.

### Tools Required

Ratchet	Level
Socket, 10mm	Socket, 16mm
Socket, 13mm	Socket, 18mm



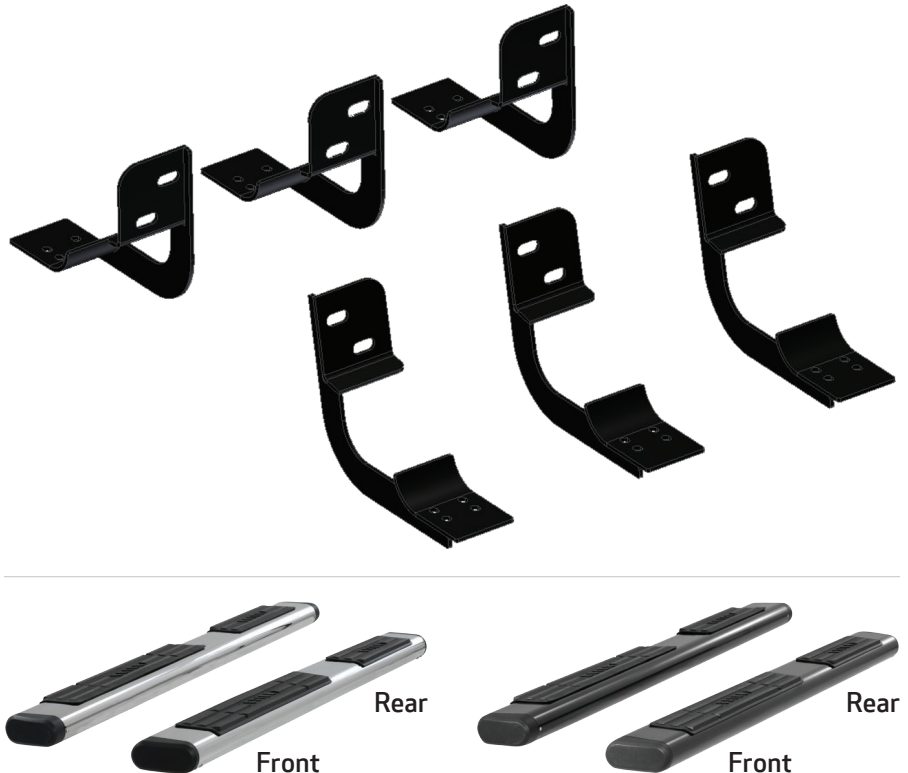
### Level of Difficulty

Easy



Scan for helpful install tips

### Product Image



### Notes and Maintenance

Before you begin installation, read all instructions thoroughly.

Proper tools will improve the quality of installation and reduce the time required.

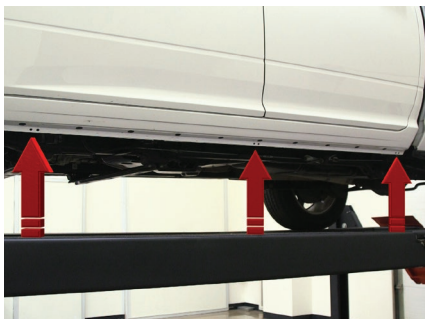
To protect the product, wax after installing. Regular waxing is recommended to add a protective layer over the finish. Do not use any type of polish or wax that may contain abrasives that could damage the finish.

For stainless steel and aluminum, polish may be used to clear small scratches and scuffs on the finish. Mild soap may be used also to clean the product.

### Step 1

Starting on the driver side, locate the three mounting tabs along the bottom edge of the vehicle body.

The mounting brackets are universal, and will fit both the driver and passenger sides.



### Step 2

Starting on the driver side front, remove the factory tape covering the oval holes on the inner body panel.



### Step 3

Insert a 12mm bolt plate with welded nut into the body panel and secure in place with a plastic retainer.

Position the bolt plate so the welded nut is facing towards the rear of the vehicle.



### Step 4

Lift the front bracket into place and attach the front bolt with a 12mm flat washer, locking washer and nut.

Snug the hardware, but do not tighten at this time.



### Step 5

Rotate the bolt and nut plate until the threaded nut lines up with the mounting location and fasten with a 10mm hex bolt with a locking washer and flat washer.



### Step 6

Repeat steps 2 through 5 for the passenger side brackets.



### Step 7

Carefully place the side bar onto the brackets with the larger step pad towards the front of the vehicle.



### Step 8 - Option 1, for stainless steel boards

Insert the bolt plate into the bottom channel of the side bar, and attach with a 6mm flat washer and nylock nut.

Snug the hardware with a 10mm socket. To allow for adjustments, do not over tighten.





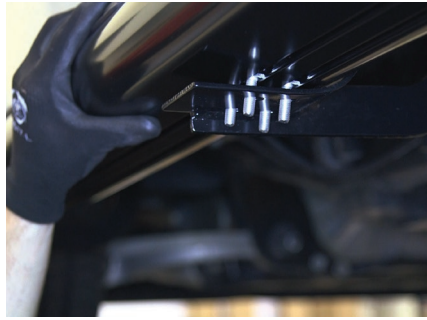
### Step 8 - Option 2, for aluminum boards

Insert four T-bolts into the bottom channels of the side bar as shown.

Slide the bolts forward to the front-most bracket and insert them through the cradle.

Repeat this for each bracket and attach with 8mm flat washer, 8mm lock washer and nut.

Snug the hardware, but do not tighten at this time.



### Step 9

Position the side bars into the desired location. Adjust if necessary and tighten all of the hardware.



### Step 10

Repeat steps 1 through 9 on the passenger side of the vehicle.

Congratulations on the installation of your brand new ARIES 6" oval side bars.

With the side bars installed, periodic inspections should be performed to ensure all mounting hardware remains tight.

To protect your investment, we recommend you apply a layer of nonabrasive wax.

