

INSTALLATION INSTRUCTIONS

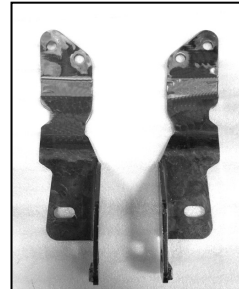
4" BULL BAR

07 GMC SIERRA 2500 / 07 CHEVY SILVERADO 2500

45-4006

PARTS LIST:

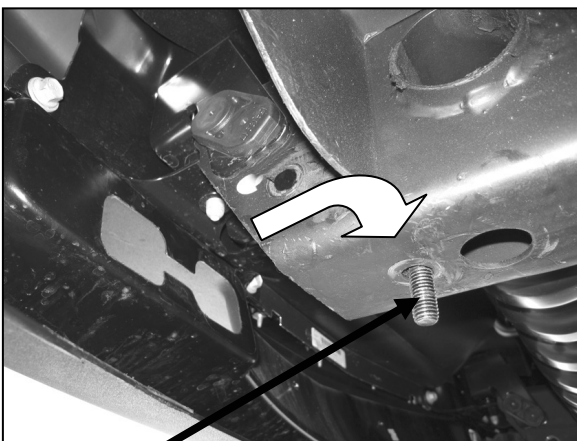
1	Bull Bar	8	12-1.75mm x 30mm Hex Head Bolts
1	Driver/Left Mounting Bracket	8	12mm Nylock Nuts
1	Passenger/Right Mounting Bracket	16	12mm ID x 29mm OD x 3mm Flat Washers



PROCEDURE:

- 1. REMOVE CONTENTS FROM BOX. VERIFY ALL PARTS ARE PRESENT. READ INSTRUCTIONS CAREFULLY BEFORE STARTING INSTALLATION. DO NOT ATTEMPT INSTALLATION ALONE; PERSONAL INJURY OR DAMAGE TO THE TRUCK MAY RESULT.**
- 2. NOTE:** It may be necessary to remove/relocate front license plate and license plate bracket. It is not required, but strongly recommended. If local/state law requires a license plate, license plate relocation kit is available.
- 3.** From underside of vehicle, remove the factory tow hooks from vehicle. **NOTE:** This Bull Bar is not compatible with factory tow hooks, so you will not be reinstalling factory tow hooks back onto vehicle.
- 4.** Determine driver and passenger side Mounting Brackets. Insert (1) 12mm x 30mm Hex Head Bolt with (1) 12mm Flat Washer on the bottom factory hole of the frame (**Figure 1**). From behind the bumper, slide driver side Mounting Bracket through tow hook factory hole. Orient Mounting Bracket to its mounting position (**Figure 2**). **NOTE:** May have to cut bumper opening for Mounting Bracket to fit (**Figure 3**). Partially attach bottom bolt with the included (1) 12mm Nylock Nut with (1) 12mm Flat Washers (**Figure 4**).
- 5.** Proceed to attach the side of the Mounting Bracket to frame using the same hardware listed in step four (**Figure 4**). Do not tighten at this time.
- 6.** Repeat steps 4 & 5 for passenger side Mounting Bracket.
- 7.** With help position Bull Bar on the inner side of Mounting Brackets. Attach Bull Bar to Mounting Bracket using the included (4) 12mm x 30mm Hex Head Bolts, (4) 12mm Nylock Nuts, (8) 12mm Flat Washers (**Figure 5**). Do not tighten at this time.
- 8.** Level and adjust Bull Bar; then tighten all hardware at this time.
- 9.** Do periodic inspections to the installation to make sure that all hardware is secure and tight.

DRIVER SIDE MOUNTING BRACKET INSTALLATION SHOWN



12mm x 30mm Hex Head Bolt w/ 12mm Flat Washers

Figure 1

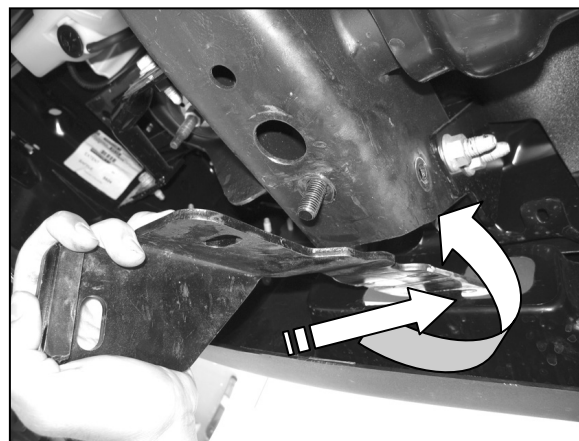


Figure 2

May have to cut plastic opening for Mounting Bracket to fit

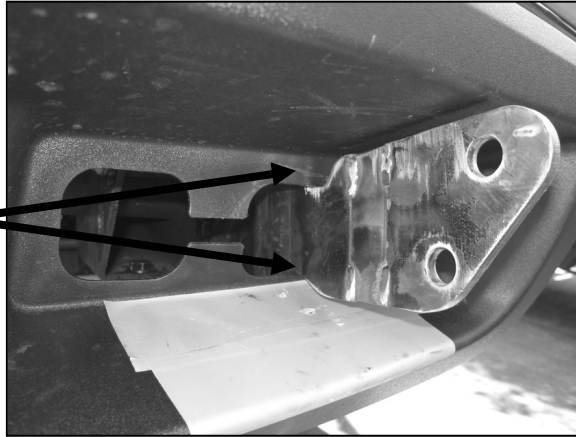
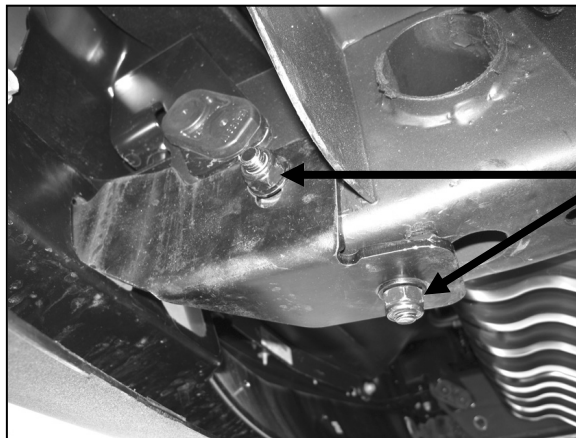


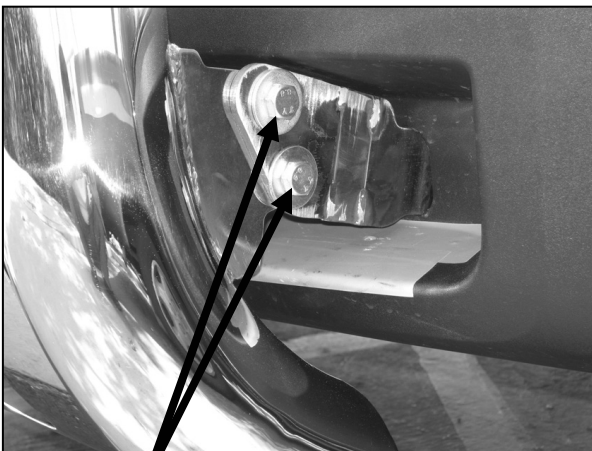
Figure 3



12mm x 30mm Hex Head Bolts, 12mm Flat Washers, & 12mm Nylock Nuts

Figure 4

Installation Complete



12mm x 30mm Hex Head Bolts, 12mm Flat Washers, & 12mm Nylock Nuts

Figure 5



Figure 6