



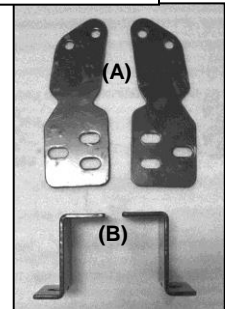
INSTALLATION INSTRUCTIONS

4 INCH BULL BAR PART #45-4005 /AL45-4005 /TB45-4005

CHEVROLET SILVERADO / GMC SIERRA 1500 07-12

PARTS LIST:

1	Bull Bar	6	12-1.75mm x 30mm Hex Head Bolts
2	Mounting Brackets (A)	8	12mm Nylock Nuts
2	Frame Brackets (B)	14	12mm ID x 29mm OD x 3mm Flat Washers
2	84mm Tube Spacers	2	12-1.75mm x 35mm Bolt Plates



PROCEDURE:

1. REMOVE CONTENTS FROM BOX. VERIFY ALL PARTS ARE PRESENT. READ INSTRUCTIONS CAREFULLY BEFORE STARTING INSTALLATION. DO NOT ATTEMPT INSTALLATION ALONE; PERSONAL INJURY OR DAMAGE TO THE TRUCK MAY RESULT.
2. **NOTE:** It may be necessary to remove/relocate front license plate and license plate bracket. It is not required, but strongly recommended. If local/state law requires a license plate, license plate relocation kit is available.
3. From underside of vehicle, remove the two bolts holding the driver factory tow hook, then remove tow hook from vehicle. **NOTE:** This Bull Bar is not compatible with factory tow hooks, so you will not be reinstalling factory tow hooks back onto vehicle.
4. Determine driver and passenger side Frame Brackets and Mounting Brackets.
5. Using a sharp utility knife cutout an opening to allow Bull Bar Mounting Brackets to pass through tow hook cavity (Figure 1).
6. Insert (1) Bolt Plate into front of driver/left side frame rail, so threaded Bolt Plate will go through rear tow hook mounting hole (Figure 3). **NOTE:** On the driver/left side, the Bolt Plate will mount to inner side of frame rail. On the passenger/right side, the Bolt Plate will mount to the outer side of frame rail.
7. Position (1) Frame Bracket on the inner side of driver/left frame rail and through already inserted Bolt Plate. Secure Frame Bracket using (1) 12mm Flat Washer and (1) 12mm Nylock Nut (Figure 3). Do not tighten at this time.
8. From the rear side of front bumper, insert (1) Mounting Bracket through tow hook cavity and mount it on the outer side of driver/left frame rail (Figure 2).
9. Insert (1) Tube Spacer into front of driver/left side frame rail and align it with front tow hook mounting location. While holding Tube Spacer in place insert factory tow hook bolt through Frame Bracket, frame, Tube Spacer, and Mounting Bracket. Secure it with factory nut. Do not tighten at this time.
10. Repeat steps 6-9 for passenger/right side. **NOTE:** The driver/left side Mounting Bracket mounts to one tow hook bolt. The driver/left side Frame Bracket mounts to one tow hook bolt and one bolt plate. The passenger/right side Mounting Bracket mounts to one tow hook bolt and one bolt plate. The passenger/right side Frame Bracket mounts to one tow hook bolt.
11. With help position the Bull Bar on the outer side of Mounting Brackets. Attach Bull Bar to Mounting Brackets using (6) 12mm x 30mm Hex Head Bolts, (6) 12mm Nylock Nuts, and (12) 12mm Flat Washers (Figure 6).
12. Adjust Bull Bar, and then tighten all the hardware at this time.
13. Do periodic inspections to the installation to make sure that all hardware is secure and tight.

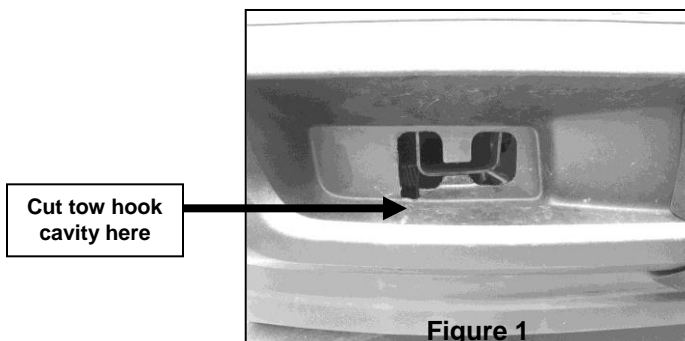


Figure 1

Driver/Left Mounting Bracket Shown Outside Of Frame Rail

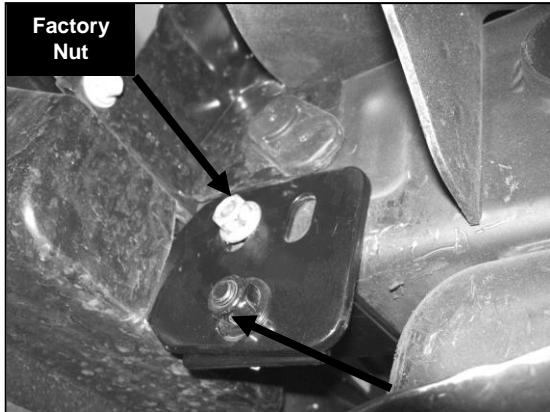


Figure 2

12mm x 30mm Hex Head Bolt, 12mm Flat Washers, & 12mm Nylock Nut

Driver/Left Frame Bracket Shown Inside Of Frame Rail

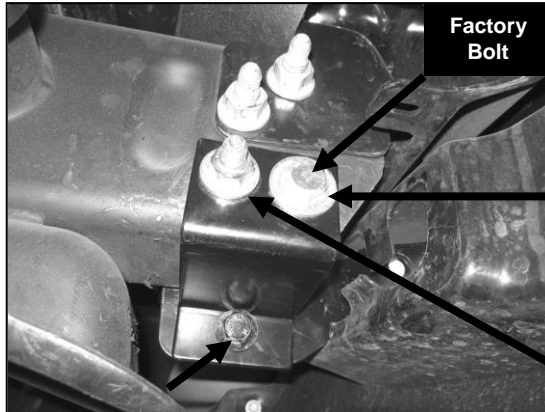


Figure 3

NOTE: Place Tube Spacer inside of frame on this mounting bolt

12mm x 35mm Bolt Plate, 12mm Flat Washer, & 12mm Nylock Nut

Passenger/Right Frame Bracket Shown Inside Of Frame Rail

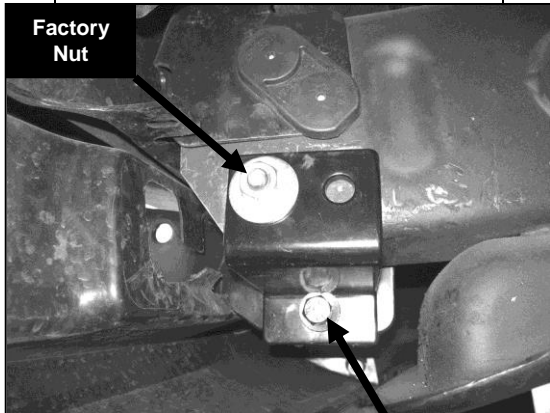


Figure 4

12mm x 30mm Hex Head Bolt, 12mm Flat Washers, & 12mm Nylock Nut

Passenger/Right Mounting Bracket Shown Outside Of Frame Rail

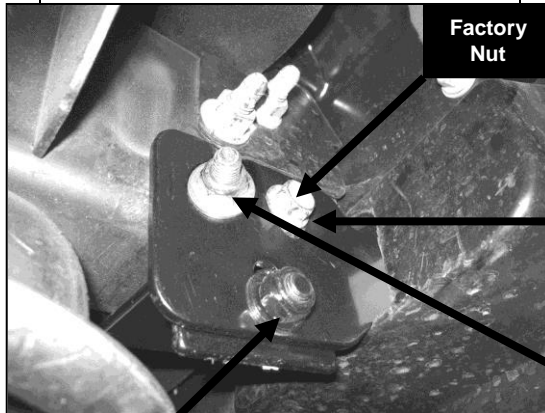


Figure 5

NOTE: Place Tube Spacer inside of frame on this mounting bolt

12mm x 35mm Bolt Plate, 12mm Flat Washer, & 12mm Nylock Nut

Installation Complete



12mm x 30mm Hex Head Bolts, 12mm Flat Washers, & 12mm Nylock Nuts

Figure 6



Figure 7