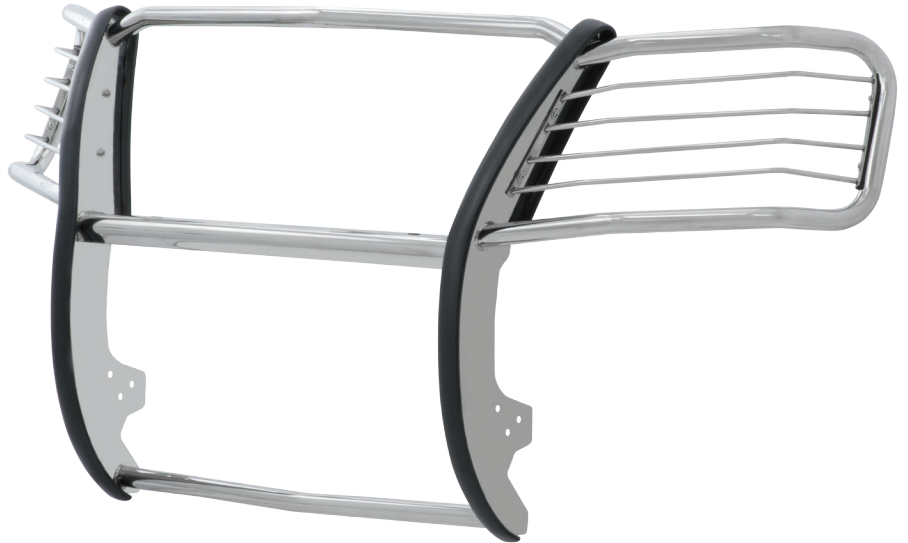


**Parts List**

1	Grille guard
2	Bracket, top
2	Bracket, bottom
2	End-bracket, bottom
2	Hex bolt, M6 x 20mm
10	Hex bolt, M12 x 30mm
2	Hex bolt, M12 x 120mm
24	Flat washer, M12
12	Nylock nut, M12

**Level of Difficulty**

Easy

Scan  
for helpful  
install tips**Product Image****Notes and Maintenance**

Before you begin installation, read all instructions thoroughly.

Proper tools will improve the quality of installation and reduce the time required.

To protect the product, wax after installing. Regular waxing is recommended to add a protective layer over the finish. Do not use any type of polish or wax that may contain abrasives that could damage the finish.

For stainless steel and aluminum, polish may be used to clear small scratches and scuffs on the finish. Mild soap may be used also to clean the product.

### Step 1

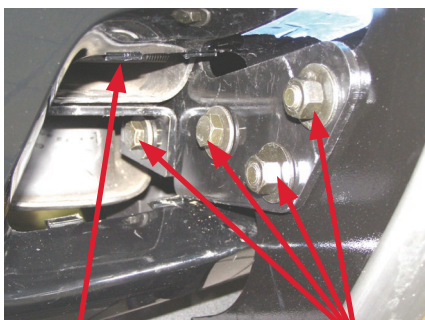
Starting on the passenger side, remove the plastic retainer tow hook cover located at the lower end of the front bumper.



### Step 2

Place a bottom bracket and a bottom end-bracket onto the vehicle and secure using two M12 x 30mm hex bolts, four M12 flat washers and two M12 nylock nuts. Also insert an M12 x 120mm hex head bolt, two M12 flat washers and a M12 nylock nut. Adjust the bottom bracket down and tighten the hardware.

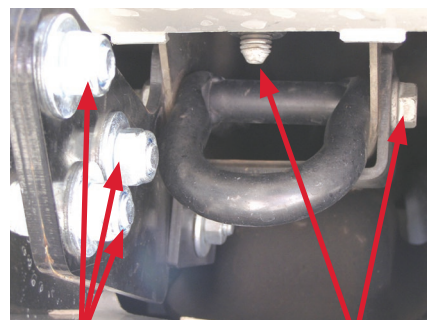
**Note:** On vehicles with factory tow hooks, use existing tow hook hardware to install the bottom bracket and bottom end-bracket.



M12 x 120mm

M12 x 30mm

Driver side



M12 x 30mm

Factory bolts

Passenger side

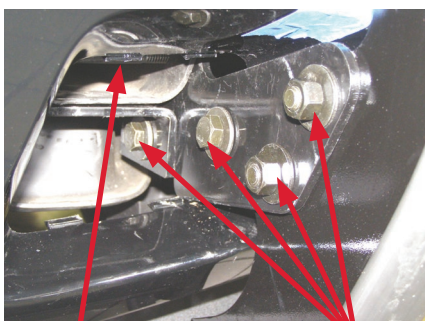
### Step 3

Repeat steps 1 and 2 on the driver-side of the vehicle.

### Step 4

Secure the grill guard to the driver- and passenger-side bottom bracket assemblies with six M12 x 30mm hex bolts, twelve M12 flat washers and six M12 nylock nuts.

Snug the hardware, but do not fully tighten.



M12 x 120mm

M12 x 30mm

Driver side

### Step 5

Open the vehicle hood for access to remove the two factory bolts located inside the grill mount and set aside.

Install the driver and passenger top bracket using the removed factory bolts.

Secure the top brackets to the grill guard using two M6 x 20mm hex bolts.

Snug the hardware, but do not fully tighten.



Grill mount

Top bracket

Factory bolt

### Step 6

At this time, adjust the grille guard to the desired position.

With the grille guard in position, it is recommended that all brackets first be tightened to the vehicle, followed by the grille guard connections.

Congratulations on the installation of your new ARIES grille guard.

With the grille guard installed, periodic inspections should be performed to ensure all mounting hardware remains tight.

To protect your investment, see the 'Notes and Maintenance' section on the first page of this instruction manual.

