



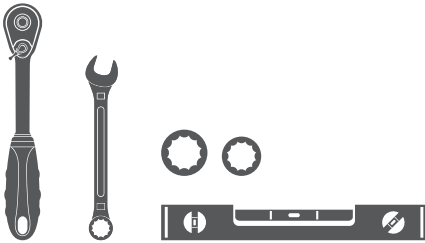
# 364045-2 INSTALLATION MANUAL

## Parts List

1	Driver / left sidebar
1	Passenger / right sidebar
8	Sidebar brackets
10	Clip-on nuts, 8mm
16	Hex bolt, 8mm x 25mm
16	Flat washer, 8mm
16	Lock washer, 8mm
18	Hex bolt, 10mm x 25mm
20	Flat washer, 10mm
20	Lock washer, 10mm
2	Bolt plate, 10mm
2	Plastic bolt retainer, 10mm
1	Def-tank L-bracket
1	Def-tank support bracket

## Tools Required

Ratchet	Socket, 16mm
Wrench, 16mm	Socket, 13mm
Level	



## Level of Difficulty

Easy



Scan  
for helpful  
install tips

## Product Image



## Notes and Maintenance

Before you begin installation, read all instructions thoroughly

Proper tools will improve the quality of installation and reduce the time required

To protect the product, wax after installing. Regular waxing is recommended to add a protective layer over the finish. Do not use any type of polish or wax that may contain abrasives that could damage the finish.

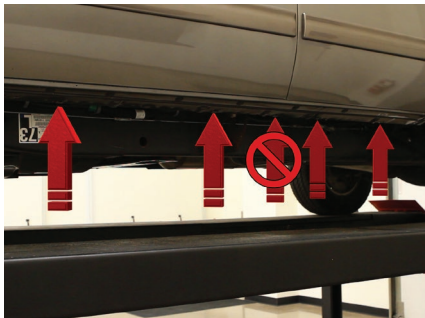
For stainless steel, aluminum polish may be used to polish small scratches and scuffs on the finish. Mild soap may be used also to clean the product.

For gloss black finishes, mild soap may be used to clean the product.

### Step 1

Locate the five mounting tabs along the bottom edge of the vehicle body.

This installation will use the first, second, fourth and fifth mounting tabs.



### Step 2

Starting at the front driver side mount location, locate the threaded hole on the inside of the body panel.

Attach the bracket to the body panel using an 8mm hex bolt with a lock and flat washer.

The bolt should only be finger tight to allow for adjustment later in the installation process.



### Step 3

Rotate the bottom of the bracket to the side to expose the hole in the mounting tab located in step 1.

Slide an 8mm clip nut over the mounting tab and rotate the bracket back into position.

Secure the bracket with a second 8mm hex bolt, lock washer and flat washer.

Snug both bolts but do not fully tighten to allow for adjustment later in the installation process.



### Step 4

Repeat steps 2 and 3 to install the second bracket over the second mounting tab location from step 1.



### Step 5

Locate the fourth tab location from step 1 and remove the rubber plug from the access hole.

Insert a clip nut through the access hole and align it over the adjacent small hole.

Secure the top of the bracket with a 8mm hex bolt, lock washer and flat washer.

Repeat step 3 to secure the bottom of the bracket.



### Step 6

Locate the five mounting tab location from step 1.

Repeat step 5 to install the fourth and final bracket on the driver side of the vehicle.



### Step 7

Carefully position the sidebar onto the mounting brackets.

Ensure all the mount locations on the bottom of the sidebar line up with the mounting brackets.

**Note:** If the holes on the sidebar do not match up with the brackets, ensure all the brackets have been installed in the correct locations.

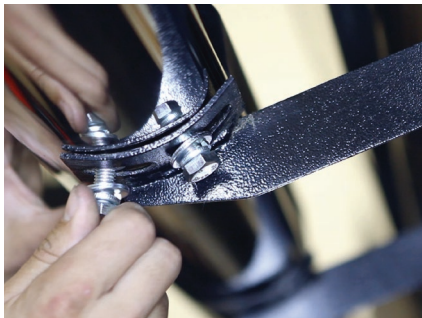
Also ensure you have selected the board for the correct side of the vehicle.



### Step 8

Attach the sidebar to the brackets with eight of the 10mm hex bolts, locking and flat washers.

The hardware should again be installed loosely to allow for adjustments.





### Step 9

Ensure your vehicle is on level ground.

Use a bubble level ensure the step side is level and parallel with the side of the vehicle. Make adjustments to the bracket positions and rotate the board as necessary.

With the board aligned, tighten all the hardware on the brackets to the vehicle.

Double check that the step side is level and finalize the install by tightening all the hardware securing it to the brackets.



### Step 10

To install the passenger side rail, repeat steps 1 through 9 on the passenger side.

**Note:** For diesel trucks, the front bracket on the passenger side will require the included specialty bracket. Follow steps 11 through 16 to complete the install.



### Step 11

Locate the specialty bracket components for diesel truck models.

Begin the install by locate the round factory hole in the bottom of the rocker panel closest to the front tire opening.

Remove the plastic plug to expose the mounting hole in the rocker panel.



### Step 12

Insert the 10mm bolt plate into the access hole in the rocker panel.

Push the plastic retainer onto the threaded end of the bolt plate to help hold the plate in position.



### Step 13

Select the 'L' shaped support bracket.  
Attach the short end of the bracket to the bolt plate with the flat washer, lock washer and 10mm hex nut.  
Leave the hardware loose at this time.



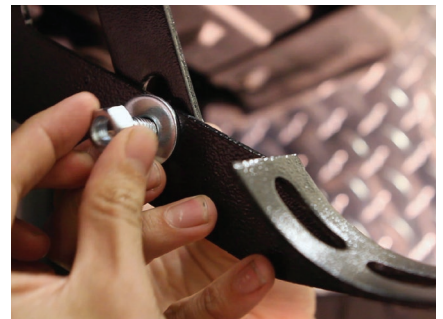
### Step 14

Slide an 8mm clip nut onto the mounting tab.  
Fasten the sidebar mounting bracket with a flat washer, lock washer and 8mm hex bolt.  
Leave the hardware loose at this time.



### Step 15

Bolt the mounting bracket to the back of the 'L' support bracket using a 10mm hex bolt flat washers, and lock washer.  
Do not fully tighten the hardware.



### Step 16

Finish the passenger side rail installation by repeating the installation process used on steps 7 through 9 on the driver side.  
Remember to do periodic inspections to make sure that all the hardware is secure and tight.

**Note:** To protect your investment, we recommend you apply a layer of nonabrasive wax.

Congratulations on completing the installation your brand new Aries 4" wheel-to-wheel oval side bars.

