

Parts List

1	Rear bumper
2	Mounting bracket, universal
8	Hex bolt, M10 x 40mm
16	Flat washer, M10
8	Lock washer, M10
8	Hex nut, M10
4	Hex bolt, M12
8	Flat washer, M12
4	Lock washer, M12
4	Hex nut, M12

Tools Required

Ratchet	Level
Torque wrench	Extension
Wrench, 16mm	Torx bit, T27
Wrench, 18mm	Drill
Socket, 16mm	Drill bit, 3/16"
Socket, 18mm	Drill bit, 1/2"
Paint marker	

Torque Specifications

	Torque Specifications	
METRIC	M6 bolt	3 ft.-lbs.
	M8 bolt	7 ft.-lbs.
	M10 bolt	16 ft.-lbs.
	M12 bolt	28 ft.-lbs.
SAE	1/4" bolt	3 ft.-lbs.
	5/16" bolt	7 ft.-lbs.
	3/8" bolt	16 ft.-lbs.
	7/16" bolt	20 ft.-lbs.
	1/2" bolt	28 ft.-lbs.

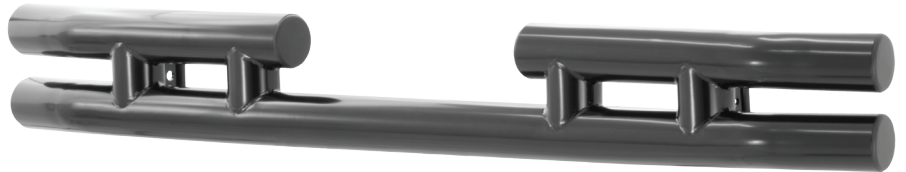
Level of Difficulty

Easy



Scan for helpful install tips

Product Image



Notes and Maintenance

Before you begin installation, read all instructions thoroughly.

Proper tools will improve the quality of installation and reduce the time required.

To protect the product, wax after installing. Regular waxing is recommended to add a protective layer over the finish. Do not use any type of polish or wax that may contain abrasives that could damage the finish.

For gloss black finishes, mild soap may be used to clean the product.

Refer to the table to the left when securing hardware during the installation process to help prevent damage to the product or vehicle.

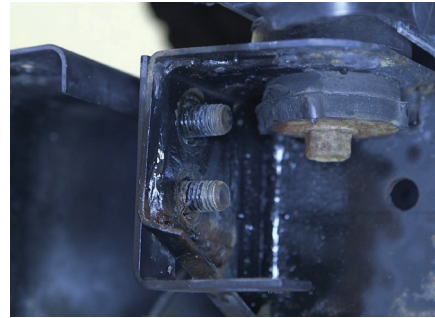
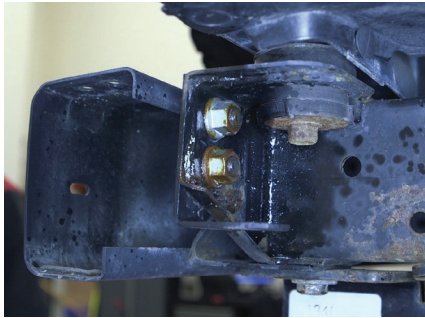
Step 1

Starting on the passenger side, using a T27 Torx, remove the Torx head bolts holding the corners of the bumper on.



Step 2

Remove the two hex nuts holding the bumper to the frame of the vehicle.



Step 3

Remove the rear most hex bolt from the frame of the vehicle.

Note: If there is a hitch present, loosen the but do not fully remove the hex nut.



Step 4

Repeat steps 1 through 3 on the driver side. Remove the factory rear bumper.



Step 5

Place the passenger side mounting bracket up to the frame of the vehicle.

Note: On 76 - 95 Wranglers / CJ's the holes in the frame will line up. On 96 - 06 Wranglers the outer holes will be located in the bumper mount frame, the inner holes will need to be drilled.

Using a paint marker, mark the two drill points.



Step 6

Using a 3/16" drill bit, drill a pilot hole in the marked areas.

Using a 1/2" drill bit, drill into the pilot holes on the frame of the vehicle.

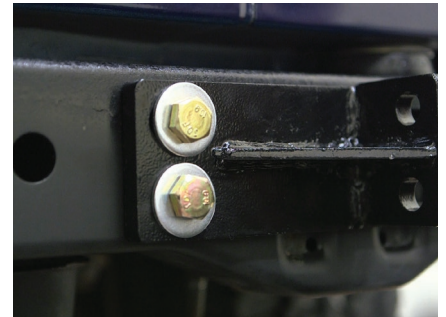
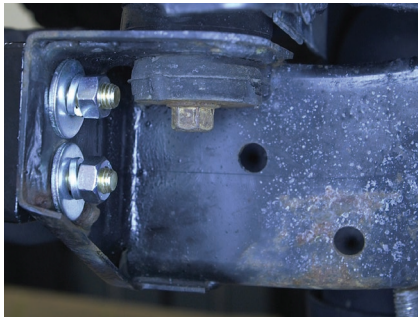
WARNING: Drill very carefully through the bumper mount frame as the fuel tank is located directly behind the bumper mount frame.



Step 7

Place the passenger side mounting bracket up to the frame, aligning the mounting points.

Secure the mounting bracket using four M10 hex bolts, eight M10 flat washers, four lock washers and four M10 hex nuts.



Step 8

Repeat steps 5 through 7 on the driver side.

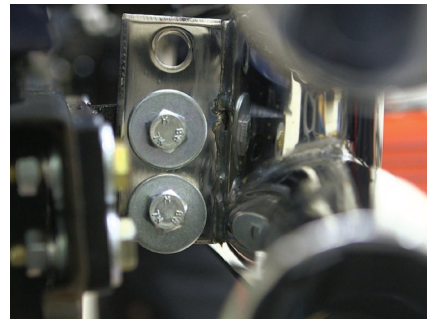


Step 9

With help, lift the rear bumper up to the mounting brackets.

Secure the bumper to the mounting brackets using two M12 hex bolts, four flat washers, two lock washers, two M12 hex nuts.

Repeat process to finish securing the bumper to the mounting brackets.



Step 10

Adjust and level the bumper.

With the bumper in position, tighten all hardware to the recommended torque specifications listed in the table on the first page.



Step 11

Congratulations on the installation of your ARIES rear tubular bumper.

With the rear tubular bumper installed, periodic inspections should be performed to ensure all mounting hardware remains tight.

To protect your investment, see the 'Notes and Maintenance' section on the first page of this instruction manual.

