

INSTALLATION MANUAL

2500211

Level of Difficulty

Moderate

Installation difficulty levels are based on time and effort involved and may vary depending on the installer level of expertise, condition of the vehicle and proper tools and equipment.

Parts List

1	Driver / left fender flare
1	Passenger / right fender flare
16	Hex bolt, M6 x 20mm
16	Rivnut, M6
17	Flat washer, M6
16	Lock washer, M6
1	Insert tool, M6
1	Left hand nut, M8
1	Metal spacer

Tools Required

Ratchet	Socket, 10mm
Wrench, 13mm	Socket, 13mm
Drill	Cut-off tool
Plier-style thread set tool, M6	Drill bit, 25/64" or 10mm
Paint marker	Trim removal tool

Torque Specifications

	Metric	SAE
	M6 bolt	3 ft.-lbs.
	M8 bolt	7 ft.-lbs.
	M10 bolt	16 ft.-lbs.
	M12 bolt	28 ft.-lbs.
	1/4" bolt	3 ft.-lbs.
	5/16" bolt	7 ft.-lbs.
	3/8" bolt	16 ft.-lbs.
	7/16" bolt	20 ft.-lbs.
	1/2" bolt	28 ft.-lbs.

Use above torque setting unless otherwise noted

Product Photo



Notes and Maintenance

Before you begin installation, read all instructions thoroughly.

Proper tools will improve the quality of installation and reduce the time required.

To protect the product, wax after installing. Regular waxing is recommended to add a protective layer over the finish. Do not use any type of polish or wax that may contain abrasives that could damage the finish.

For polished, gloss and other smooth finishes, polish may be used to clear small scratches and scuffs on the finish.

Mild automotive detergent may be used to clean the product. Do not use dish detergent, abrasive cleaners, abrasive pads, wire brushes or other similar products that may damage the finish.

Refer to the table to the left when securing hardware during the installation process to help prevent damage to the product or vehicle.

Product Registration

CURT Group stands behind our products with industry leading warranties. You can help us continue to improve our product line and help us understand your needs by registering your purchase by visiting:

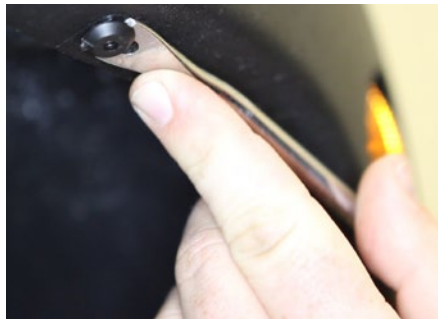
warranty.curtgroup.com/surveys

At CURT Group, customer is king. We value your feedback and we use that information to make improvements on our products. Please, take a minute and let us know how we are doing.

Step 1

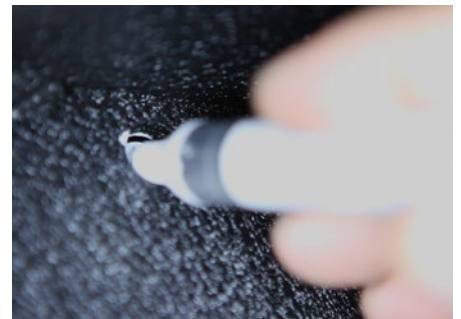
To install the rear fender flares, remove all push-in retainers. Take care not to damage the plastic inner fender flare.

Using a 10mm socket, remove all hex bolts. Remove the stock fender flare.



Step 2

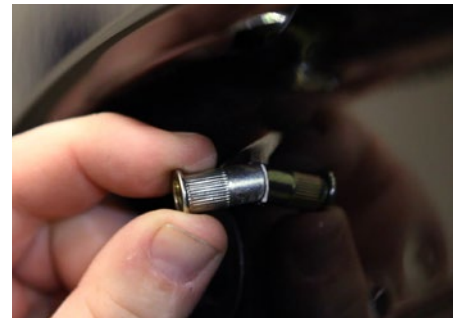
Hold the ARIES rear fender against the body to check alignment with factory holes and mark the mounting locations.



Step 3

If one of mounting points do not line up with a factory hole, mark a new mounting location. Drill a new hole at the marked location using a 25/64" or 10mm drill bit. Check to make sure that the threaded metal insert will fit.

Do not make the holes larger than required or the rivnuts may fail to install.

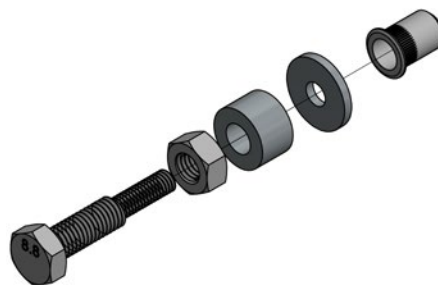


Step 4

If a plier-style thread-set will be used to install the rivnuts proceed to the installation locations in step 5.

Screw the left handed nut completely onto the thread-set tool. Slide the metal spacer onto the larger thread until it rests against the M8 left hand nut.

Place an M6 flat washer on the small thread followed by an M6 rivnut. Thread the rivnut onto the small end of the tool until it seats the washer against the shoulder between the M6 and M8 threads.

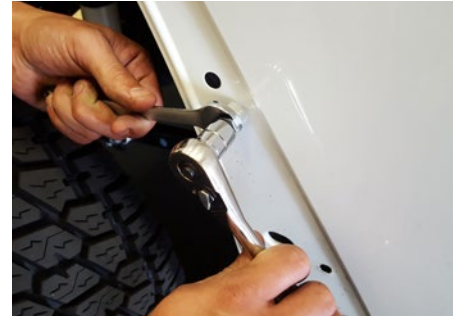


Step 5

Insert the rivnut into the drilled hole. Using an open ended 13mm wrench, hold the M8 nut on the thread setting tool.

With a 13mm socket, turn the head of the bolt clock-wise until the M8 nut and metal spacer contact the M6 washer and rivnut. After tension is felt, carefully compress the rivnut in the hole while applying slight pressure to keep it seated (approximately two full rotations).

WARNING: Over tightening the rivnut may damage the thread set tool and / or vehicle rocker panel. Only compress the rivnut enough to seat in the hole without rotating.



Step 6

Hold the plastic inner fender flare in place and mark for trimming. Cut carefully and check the fit. Place the flare aside when finished.



Step 7

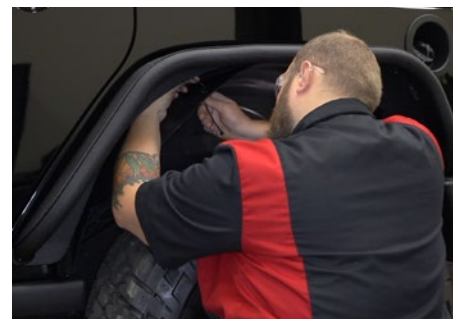
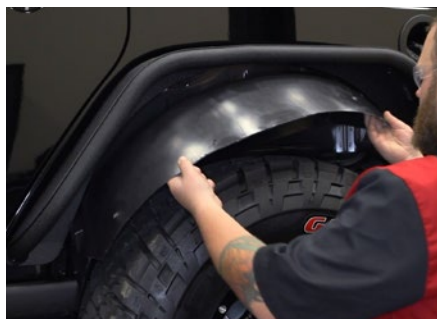
Lift the ARIES rear fender into place and thread on the supplied 6mm bolt, locking washer and flat washer.



Step 8

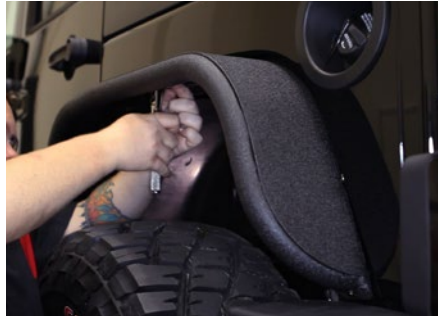
Reinstall the inner fender well using the stock hardware where applicable.

To ensure a tight fit, additional fastening may be required with zip ties (not included).



Step 9

Tighten down all hardware with a 10mm socket. Repeat this process on the passenger side.



Step 10

Congratulations on the installation of your new ARIES fender flares.

With the fender flares installed, periodic inspections should be performed to ensure all mounting hardware remains tight.

To protect your investment, see the 'Notes and Maintenance' section on the first page of this instruction manual.

