

Parts List

1	Driver / left side rocker step
1	Passenger / right side rocker step
12	Flat washer, M8
12	Lock washer, M8
12	Hex bolt, M8 - 1.25 x 30mm

Tools Required

Ratchet	Extension
Socket, 12mm	Torque wrench
Socket, 13mm	Level

Torque Specifications

	Torque Specifications	
METRIC	M6 bolt	3 ft.-lbs.
	M8 bolt	7 ft.-lbs.
	M10 bolt	16 ft.-lbs.
	M12 bolt	28 ft.-lbs.
SAE	1/4" bolt	3 ft.-lbs.
	5/16" bolt	7 ft.-lbs.
	3/8" bolt	16 ft.-lbs.
	7/16" bolt	20 ft.-lbs.
	1/2" bolt	28 ft.-lbs.

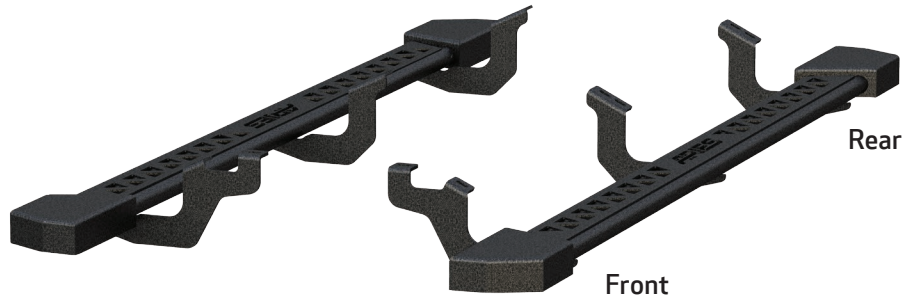
Level of Difficulty

Easy



Scan for helpful install tips

Product Image

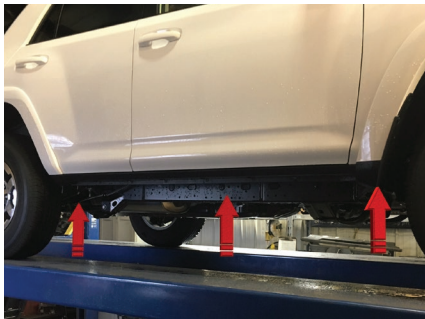


Notes and Maintenance

- Before you begin installation, read all instructions thoroughly.
- Proper tools will improve the quality of installation and reduce the time required.
- For black finishes, mild soap may be used to clean the product.
- Refer to the table to the left when securing hardware during the installation process to help prevent damage to the product or vehicle.

Step 1

Starting on the passenger side, locate the three mounting locations underneath the vehicle.



Step 2

Remove the two hex bolt plugs.

With help, lift the rocker step up to the vehicle and align the mounting holes on rocker step with the mounting points on the vehicle.



Step 3

Secure the rocker step to the vehicle using two M8 hex bolts, two M8 lock washers and two M8 flat washers.

Snug the hardware. Do not fully tighten.



Step 4

Repeat steps 2 and 3 to secure the middle and rear mounting points.

With the rocker step in position, tighten all hardware to the recommended torque specifications on page one.



Step 5

Repeat steps 1 through 4 on the passenger side of the vehicle.

Congratulations on the installation of your new ARIES rocker steps.

With the rocker steps installed, periodic inspections should be performed to ensure all mounting hardware remains tight.

