



MODULAR BUMPER INSTALLATION MANUAL

Parts List*

| | |
|----|-----------------------------------|
| 1 | Center section |
| 1 | Side extension, passenger / right |
| 1 | Side extension, driver / left |
| 1 | Side cap, passenger / right |
| 1 | Side cap, driver / left |
| 1 | Brush guard, center |
| 1 | Brush guard, passenger / right |
| 1 | Brush guard, driver / left |
| 1 | Vacuum pump support bracket |
| 1 | Vac. pump support bracket plate |
| 6 | Lock nut, 4mm |
| 6 | Socket cap screw, 4mm |
| 12 | Flat washer, 4.25mm x 9mm |
| 1 | Hex bolt, 8mm x 25mm |
| 1 | Lock washer, 8mm |
| 1 | Hex bolt, 6mm x 35mm |
| 1 | Flat washer, 6mm |
| 1 | Lock washer, 6mm |
| 1 | Hex nut, 6mm |
| 18 | Hex bolt, 10mm x 35mm |
| 30 | Flat washer, 10mm x 24mm |
| 18 | Lock washer, 10mm |
| 12 | Nut, 10mm |
| 8 | Hex bolt, 12mm x 35mm |
| 16 | Flat washer, 12mm x 24mm |
| 8 | Lock washer, 12mm |
| 8 | Nut, 12mm |

* Parts and hardware may vary based on the bumper configuration

Level of Difficulty

Moderate



Scan for helpful install tips

Product Image



Mid



Full

See pages 2 and 3 for available modular bumper configurations

Notes and Maintenance

If using an aluminum bumper and the use of a winch is intended, a separate winch receiver plate bracket MUST be purchased - ARIES part# 15600WRB.

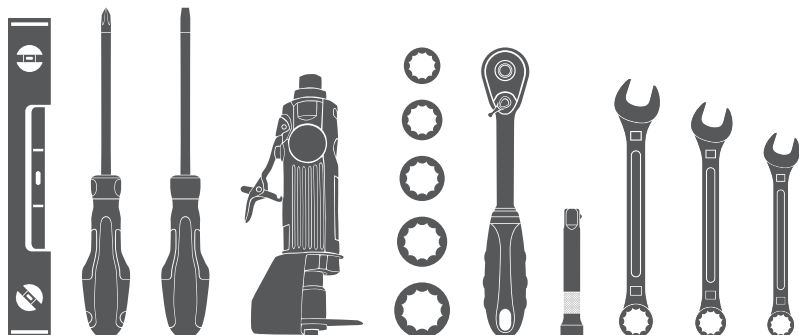
Before you begin installation, read all instructions thoroughly.

Proper tools will improve the quality of installation and reduce the time required.

To protect the product, wax after installing. Regular waxing is recommended to add a protective layer over the finish. Do not use any type of polish or wax that may contain abrasives that could damage the finish.

Tools Required

| | |
|--------------|----------------------|
| Ratchet | Ratchet extension |
| Cut-off tool | Phillips screwdriver |
| 7mm socket | Flathead screwdriver |
| 10mm socket | Wrench, 10mm |
| 13mm socket | Wrench, 16mm |
| 16mm socket | Wrench, 18mm |
| 18mm socket | Level |



FULL FRONT MODULAR BUMPER KITS

Steel



2071030



2071031



2071032

Aluminum



2071023



2071024



2071020



2071021



2071022

| Full Front Modular Bumper Kits | | | | | | | | |
|--------------------------------|----------------|-----------------|--------------|--------------------------|---------------|-------------|----------------------|--------------------|
| Kit Part# | Center Section | Side Extensions | Brush Guards | Center and Side Material | Center Finish | Side Finish | Brush Guard Material | Brush Guard Finish |
| 2071030 | 15600-0 | 15600-1 | 15600-4 | Steel | 2 | 2 | Steel | 2 |
| 2071031 | 15600-0 | 15600-1 | 15600-4-2 | Steel | 2 | 2 | Stainless steel | 1 |
| 2071032 | 15600-0 | 15600-1 | -- | Steel | 2 | 2 | -- | -- |
| 2071023 | AL15600-0 | AL15600-1 | -- | Aluminum | 2 | 2 | -- | -- |
| 2071024 | AL15600-0-3 | AL15600-1 | -- | Aluminum | 3 | 2 | -- | -- |
| 2071020 | AL15600-0 | AL15600-1 | AL15600-4 | Aluminum | 2 | 2 | Aluminum | 2 |
| 2071021 | AL15600-0 | AL15600-1 | 15600-4-2 | Aluminum | 2 | 2 | Stainless steel | 1 |
| 2071022 | AL15600-0-3 | AL15600-1 | AL15600-4 | Aluminum | 3 | 2 | Aluminum | 2 |
| RA15600 | RA15600-0 | RA15600-1 | RA15600-4 | Aluminum | 4 | 4 | Aluminum | 4 |

- Finishes:
- 1. Polished stainless steel
 - 2. Textured black powder coat
 - 3. Silver powder coat
 - 4. Raw aluminum (available by special order)

MID FRONT MODULAR BUMPER KITS

Steel



2071033



2071034



2071035

Aluminum



2071028



2071029



2071025



2071026



2071027

Mid Front Modular Bumper Kits

| Kit Part# | Center Section | Side Caps | Brush Guard | Center and Side Material | Center Finish | Side Finish | Brush Guard Material | Brush Guard Finish |
|-----------|----------------|------------|-------------|--------------------------|---------------|-------------|----------------------|--------------------|
| 2071033 | 15600-0 | C15600-1 | 15600-5 | Steel | 2 | 2 | Steel | 2 |
| 2071034 | 15600-0 | C15600-1 | 15600-5-2 | Steel | 2 | 2 | Stainless steel | 1 |
| 2071035 | 15600-0 | C15600-1 | -- | Steel | 2 | 2 | -- | -- |
| 2071028 | AL15600-0 | ALC15600-1 | -- | Aluminum | 2 | 2 | -- | -- |
| 2071029 | AL15600-0-3 | ALC15600-1 | -- | Aluminum | 3 | 2 | -- | -- |
| 2071025 | AL15600-0 | ALC15600-1 | AL15600-5 | Aluminum | 2 | 2 | Aluminum | 2 |
| 2071026 | AL15600-0 | ALC15600-1 | 15600-5-2 | Aluminum | 2 | 2 | Stainless steel | 1 |
| 2071027 | AL15600-0-3 | ALC15600-1 | AL15600-5 | Aluminum | 3 | 2 | Aluminum | 2 |

Finishes:

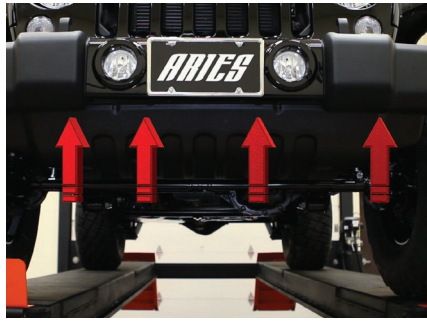
1. Polished stainless steel
2. Textured black powder coat
3. Silver powder coat

1 | FACTORY BUMPER REMOVAL

Step 1

Using a flat head screwdriver, pry and remove four plastic push pins holding the air dam in place. Remove the air dam from underneath the vehicle.

Once removed, pry off the fasteners holding the brackets to the frame.



Step 2

From behind the bumper, disconnect the wiring harness attached to each fog light. Unclip the wiring harness from the bumper cover.



Step 3

Locate two fasteners holding the frame cover in place on top of the bumper.

Remove these with a Phillips screwdriver.

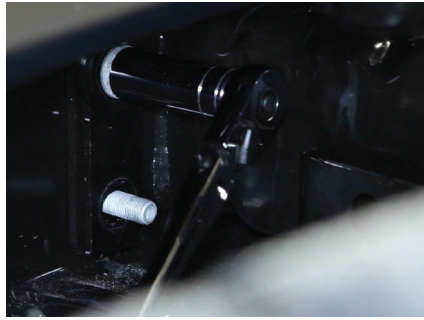


Step 4

When facing the Jeep head-on, slide the cover to the left to expose the driver side bolts holding the bumper in place.

Remove the four nuts holding the bolts onto the bumper frame with an 18mm socket.

Repeat this on the passenger side.



Step 5

When all the bolts have been removed carefully lift the bumper from the frame and set on a flat work surface.

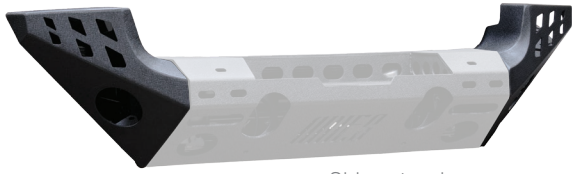


Step 6

Remove the stock fog lights to be used in the new ARIES front bumper.



2A | SIDE EXTENSION INSTALLATION



Side extensions

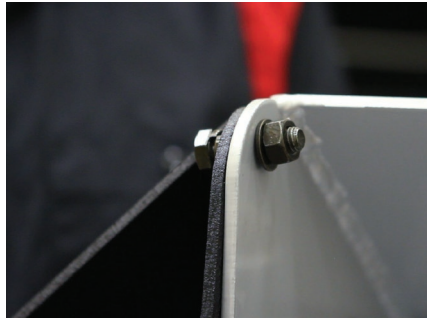
Step 1

Set the new ARIES center section onto a flat work surface. Lift the bumper side extension into place and insert a 10mm hex bolt with a locking and flat washer.

Secure the bolt with a second flat washer and a hex nut.

Repeat this for all six attachment points.

Snug the hardware at this time, but do not tighten.



Step 2

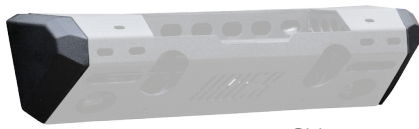
Repeat steps 1 and 2 on the opposite side extension.

With both extensions loosely installed, check to make sure that the bumper corners match up.

Adjust if necessary and fully tighten all the hardware with a 16mm socket and wrench.



2B | SIDE CAP INSTALLATION

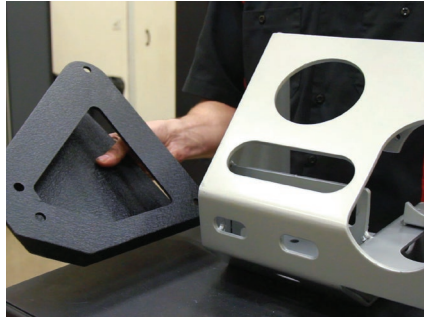


Side caps

Step 1

Lift the side cap into place and insert a wire welded hex bolt with flat washer through the inside of the side cap and into the front most attachment point.

Secure the hex bolt with a second flat washer, a lock washer and a nut.



Step 2

Repeat step 1 for the second front mounting location on the side cap.

Snug the hardware, but do not fully tighten at this time.



Step 4

Insert a 10mm hex bolt with flat washer through the rear corner mounting location. Fasten with a flat washer, lock washer and nut.

Repeat for the second rear attachment point.



Step 5

Repeat steps 1 through 4 on the opposite side cap. When complete, check to make sure that the side caps are aligned to the center bumper section.

Adjust if necessary and tighten all the hardware with a 16mm socket and wrench.



3 | BRUSH GUARD INSTALLATION



Full brush guard



Mid brush guard

Step 1

For mid bumper kits skip to step 2.

On full bumper kits, attached the two side tubes with the provided 10mm hex bolts, lock washers and flat washers.

Align and fully tighten the hardware with a 16mm socket.



Step 2

Finalize the brush guard install by attaching the center brush guard loop.

Secure the center tube with the provided 10mm hex bolts, lock washers and flat washers.

Ensure the tube is aligned properly and fully tighten the hardware with a 16mm socket.



4 | MODULAR BUMPER INSTALLATION

Step 1

For 2012 models and later, you will see a vacuum pump on the driver side. This will need to be moved to accommodate the new bumper.

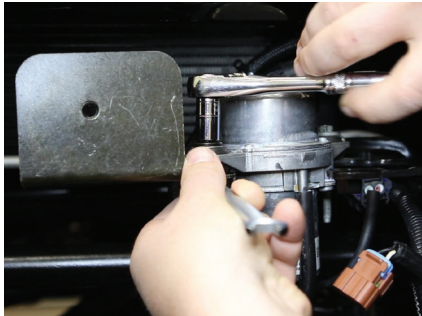
With a 10mm socket, loosen the rear bolt and fully remove the front bolt. Swing the vacuum pump toward the rear of the vehicle and snug the rear bolt, but do not fully tighten.



Step 2

Place the new vacuum pump support bracket under the rubber grommet on the front mounting location. Insert a 6mm bolt with locking and flat washer.

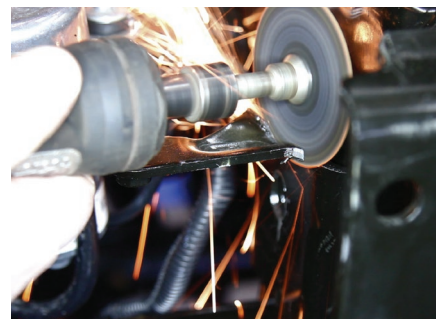
Attach a 6mm nut and tighten the hardware with a 10mm socket and wrench.



Step 3

With the vacuum pump moved, you will be left with the factory bracket that originally held the front post in place. This will need to be removed to allow clearance for the winch receiver plate to fit into place.

Using a cutoff tool, carefully remove the front post bracket.

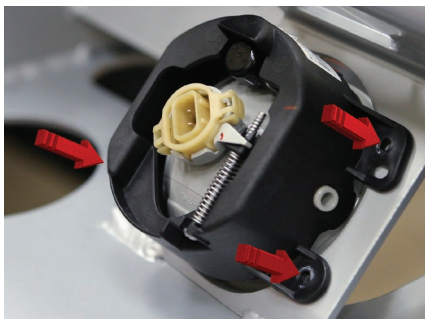


Step 4

Set the fog lights into the new bumper. Each light will have three attachment points.

Insert a 4mm socket cap screw with flat washer and fasten with a flat washer and nylock nut.

Tighten with a 7mm socket and included Allen wrench. Repeat this for the other light.

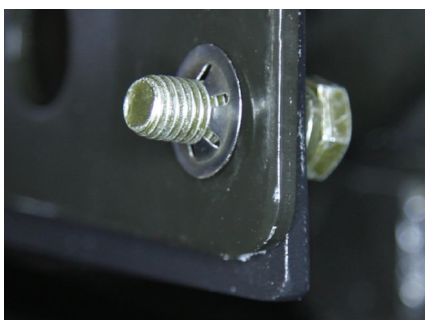


Step 5 (Winch receiver plate bracket #15600WRB required for aluminum bumper when used with a winch)

If you are not installing a winch receiver plate bracket, skip to step 6.

If you are planning to use a winch on the aluminum front bumper, you will need to purchase a winch receiver plate bracket (#15600WRB).

Lift and angle the bracket into place and insert a 12mm hex bolt and flat washer from the bumper hardware package. Attach a speed nut to hold the bracket and bolt in place.



Step 6

With help, lift the bumper into place over the pre-mounted 12mm bolts in the factory bumper mount locations.

If the winch receiver plate bracket was not installed, the included 12mm bolts will be installed in step 7.

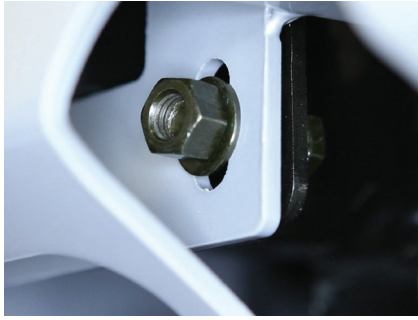


Step 7

Insert a 12mm hex bolt with flat washer behind the bumper bracket and secure with a flat and lock washer with a hex nut.

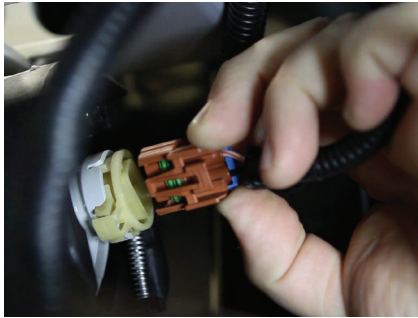
Depending on the year of the Jeep, there may be as few as two mounting points to attach to. This example has three per side.

Snug all hardware at this time, but do not fully tighten.



Step 8

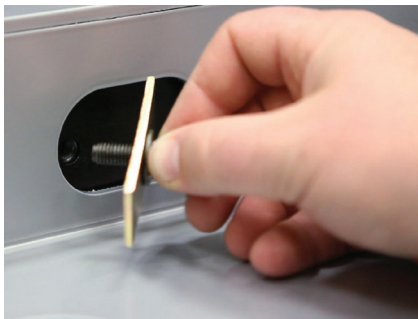
Reattach the fog lights and wire harness to the bumper.



Step 9

With an 8mm bolt and lock washer attach the support bracket plate to the vacuum pump support bracket.

Tighten with a 13mm socket.



Step 10

Check to make sure the bumper is level. Adjust if necessary and tighten all hardware. We suggest doing periodic inspections to make sure all hardware is tight and secure.

To protect your investment, we recommend applying a layer of non-abrasive wax.

Congratulations on completing the installation of your new ARIES modular bumper.

