



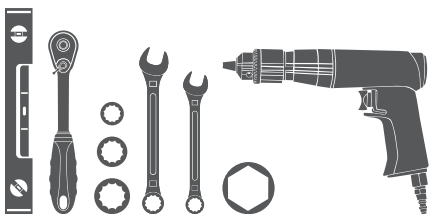
206008-2 INSTALLATION MANUAL

Parts List

1	Driver / left side bar
1	Passenger / right side bar
1	Driver / left front bracket
1	Passenger / right front bracket
1	Driver / left frame bracket
1	Passenger / right frame bracket
1	Driver / left rear bracket
1	Passenger / right rear bracket
2	Bolt plate, 10mm x 40mm
2	Bolt plate, 12mm x 40mm (short)
2	Bolt plate, 12mm x 40mm (long)
2	Self-tapping screw, 1/4" - 14
2	Nut, 10mm
6	Lock washer, 8mm
10	Lock washer, 10mm
6	Flat washer, 8mm
18	Flat washer, 10mm x 22mm OD
4	Flat washer, 12mm
6	Hex bolt, 8mm x 25mm
12	Hex bolt, 10mm x 30mm
4	Lock nut, 10mm
4	Lock nut, 12mm

Tools Required

Ratchet	Level
Socket, 16mm	Driver, 3/8"
Socket, 17mm	Wrench, 13mm
Socket, 19mm	Wrench, 16mm
Drill	--



Level of Difficulty

Easy



Scan for helpful install tips

Product Image



Brackets



Driver side brackets

Passenger side brackets

Notes and Maintenance

Before you begin installation, read all instructions thoroughly

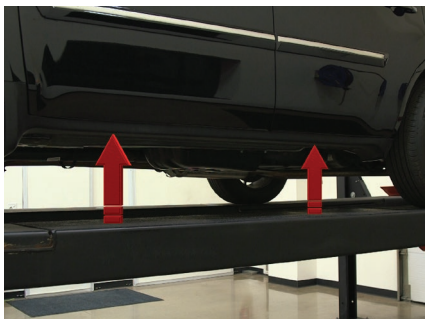
Proper tools will improve the quality of installation and reduce the time required

To protect the product, wax after installing. Regular waxing is recommended to add a protective layer over the finish. Do not use any type of polish or wax that may contain abrasives that could damage the finish.

For stainless steel and aluminum, polish may be used to clear small scratches and scuffs on the finish. Mild soap may be used also to clean the product.

Step 1

Starting on the driver side, locate the two mounting locations along the body.



Driver side brackets

Step 2

Starting at the front, locate the two threaded holes on the rocker panel.

Lift the bracket into place and insert an 8mm hex bolt with flat and locking washers. Snug the hardware, but do not fully tighten.



Step 3

Locate the round hole on the bottom of the inner frame channel and insert a 12mm x 40mm (short) bolt plate.



Step 4

Slide the driver side frame bracket over the bolt and hold in place with a 12mm flat washer and nylock nut.



Step 5

Line up the two holes on the brackets.

Insert a 10mm bolt with a 10 x 26mm flat washer and attach with another flat washer and nylock nut.



Step 6

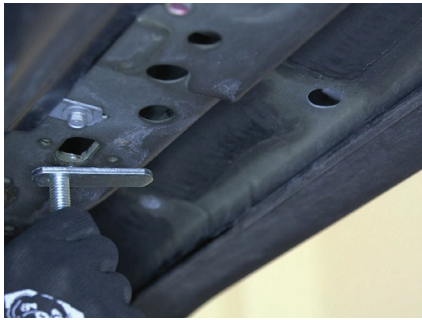
Snug the 10mm and 12mm hardware, but do not fully tighten.



Step 7

To mount the rear bracket, insert the 12mm x 40mm (long) bolt plate into the oval hole on the bottom of the frame channel.

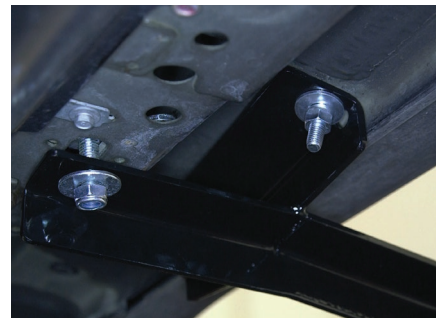
Insert the 10mm bolt plate into the circular hole on the body panel near the pinch weld.



Step 8

Lift the bracket into place and attach a 10mm x 26mm flat washer, lock washer and nut onto the 10mm bolt plate.

Secure the bracket to the 12mm bolt plate with a flat washer and nylock nut.



Step 9

If you are replacing factory-installed running boards, attach the rear mounting bracket with an 8mm bolt with lock washer and flat washer.

If you are attaching side bars for the first time, see step 10.



Driver side brackets

Step 10

If you are attaching side bars for the first time, attach the bracket with the included self-tapping screw with a 3/8" driver and power drill. Snug the hardware, but do not fully tighten.



Step 11

Lift your new side bar into place and attach with a 10mm bolt, lock washer and flat washer.



Step 12

Check to make sure the side bar is level and adjust if necessary. Once aligned, tighten all hardware and adjust as necessary.

Repeat this entire process on the passenger side. Remember to do periodic inspections to make sure that all hardware is secure and tight.

Congratulations on the installation of your new Aries 4" oval side bars.



Passenger side brackets