

### Parts List

|   |                                 |
|---|---------------------------------|
| 1 | Driver / left running board     |
| 1 | Passenger / right running board |
| 2 | Mounting bracket, front         |
| 2 | Mounting bracket, middle        |
| 2 | Mounting bracket, rear          |
| 4 | Flange bolt, 6mm                |
| 8 | Bolt plate, 10mm                |
| 8 | Flat washer, 10mm               |
| 8 | Lock washer, 10mm               |
| 8 | Hex nut, 10mm                   |
| 8 | Plastic bolt retainer           |

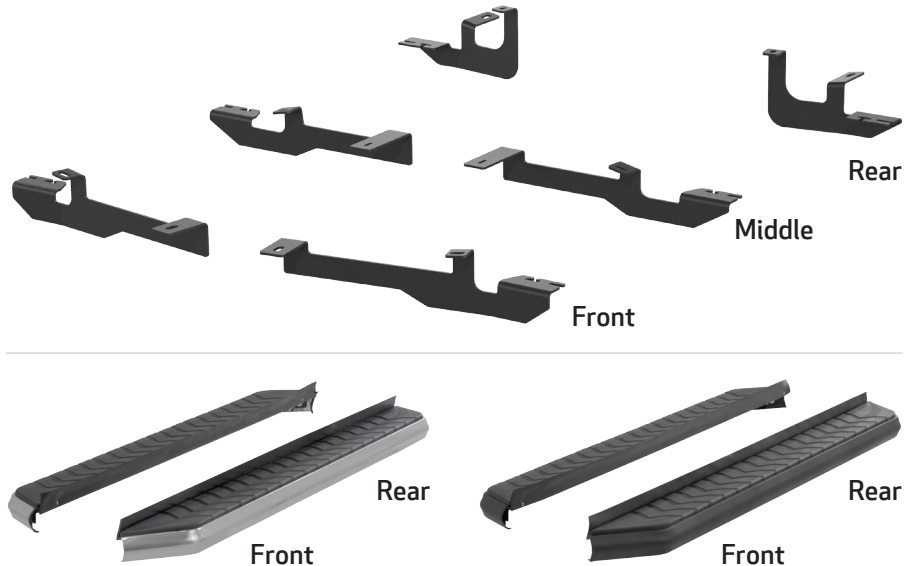
### Level of Difficulty

Easy



Scan for helpful install tips

### Product Image



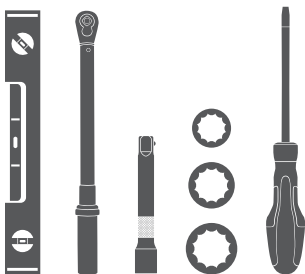
### Additional Hardware\*

|    |                  |
|----|------------------|
| 12 | Hex bolt, 8mm    |
| 12 | Flat washer, 8mm |
| 12 | Lock washer, 8mm |
| 12 | Hex nut, 8mm     |

\* Running boards are supplied with additional hardware. Quantities listed are in addition to the standard supplied hardware.

### Tools Required

|               |                      |
|---------------|----------------------|
| Torque wrench | Extension            |
| Socket, 10mm  | Level                |
| Socket, 13mm  | Flathead screwdriver |
| Socket, 16mm  |                      |



### Notes and Maintenance

Before you begin installation, read all instructions thoroughly.

Proper tools will improve the quality of installation and reduce the time required.

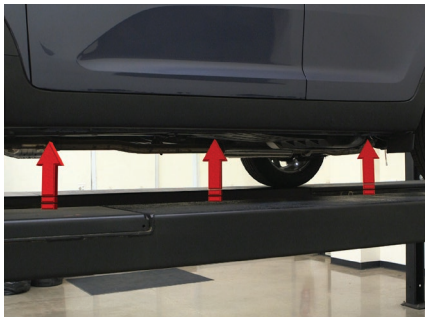
For stainless steel, polish may be used to clear small scratches and scuffs on the finish. Mild soap may be used also to clean the product.

For black finishes, mild soap may be used to clean the product.

### Step 1

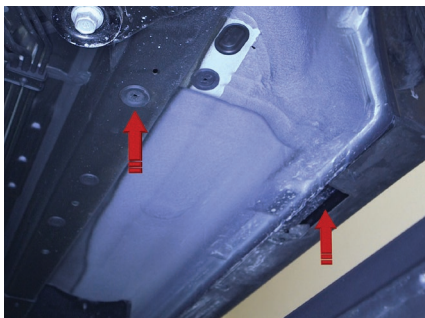
Starting on the driver side, locate the three mounting locations underneath the vehicle.

**Note:** Each bracket is specific to a mounting location. Reference page 1 product image for correct locations.



### Step 2

Locate the two driver-side front mounting tabs.



### Step 3

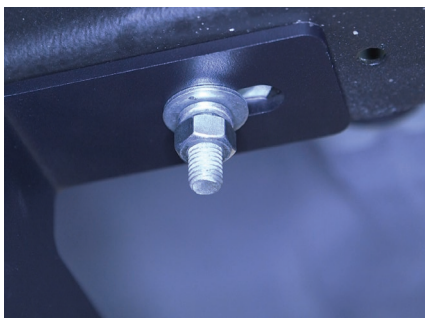
Remove the hole plugs and insert a 10mm bolt plate into each opening. Slide a plastic bolt retainer over the threads of the bolts to hold the bolts in place.



### Step 4

Place the front driver-side mounting bracket onto the vehicle and secure with a 10mm flat washer, 10mm lock washer and 10mm hex nut on each bolt plate stud.

Snug the hardware, but do not fully tighten.



### Step 5

Locate and remove the factory hex bolts from the plastic liner at the middle driver-side mounting location.

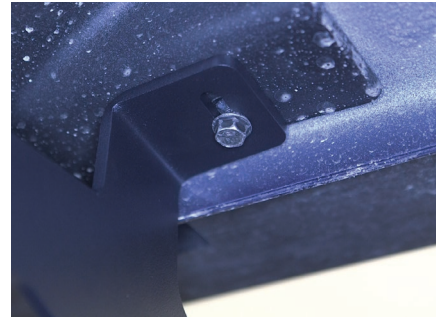
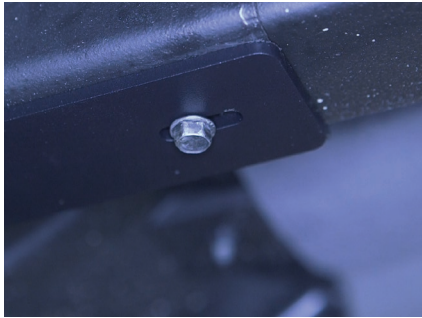
Place the middle driver-side mounting bracket onto the vehicle.



### Step 6

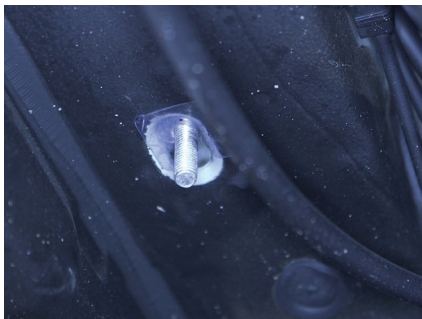
Secure the middle driver-side mounting bracket to the vehicle with two 6mm flange bolts.

Snug the hardware, but do not fully tighten.



### Step 7

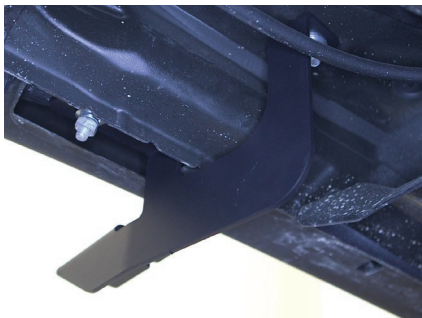
Locate the two driver-side rear mounting tabs. Remove the hole plugs and insert a 10mm bolt plate into each opening. Slide a plastic bolt retainer over the threads of the bolts to hold the bolts in place.



### Step 8

Place the rear driver-side mounting bracket onto the vehicle and secure with a 10mm flat washer, 10mm lock washer and 10mm hex nut on each bolt plate stud.

Snug the hardware, but do not fully tighten.

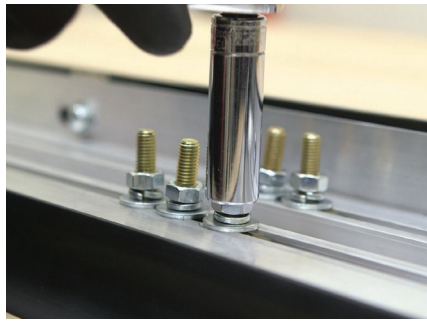




### Step 9

Remove the 8mm nuts, 8mm lock washers and 8mm flat washers from the running board.

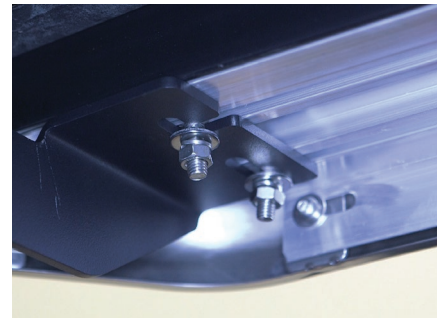
Place the running board onto the brackets and align the 8mm bolts with the slots in the brackets on the vehicle.



### Step 10

Attach the running board to the brackets using six 8mm bolts, six 8mm lock washers, six 8mm flat washers and six 8mm nuts.

Snug the hardware, but do not fully tighten.



### Step 11

Adjust and level the running board, centering it between the front and rear wheel wells.

With the running board in position, it is recommended to tighten all brackets to the vehicle first, followed by the running board connections.



### Step 12

Repeat steps 1 through 11 on the passenger side of the vehicle.

Congratulations on the installation of your brand new ARIES AeroTread™ running boards.

With the running boards installed, periodic inspections should be performed to ensure all mounting hardware remains tight.

To protect your investment, see the 'Notes and Maintenance' section on the first page of this instruction manual.

