

Parts List

| | |
|---|---------------------------------|
| 1 | Driver / left running board |
| 1 | Passenger / right running board |
| 2 | Mounting bracket, front |
| 2 | Mounting bracket, rear |
| 2 | T-bolt, 65mm tab |
| 4 | T-bolt, 70mm tab |
| 1 | Hex head screw, 6mm |
| 1 | Flat washer, 6mm |
| 1 | Lock washer, 6mm |
| 6 | Flat washer, 10mm |
| 6 | Lock washer, 10mm |
| 6 | Hex nut, 10mm |

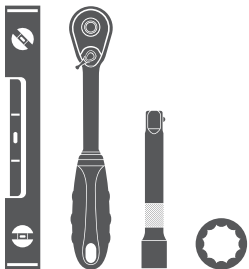
Additional Hardware*

| | |
|----|------------------|
| 12 | Hex bolt, 8mm |
| 12 | Flat washer, 8mm |
| 12 | Lock washer, 8mm |
| 12 | Hex nut, 8mm |

* Running boards are supplied with additional hardware. Quantities listed are in addition to the standard supplied hardware.

Tools Required

| | |
|------------------|--------------|
| Ratchet | Socket, 16mm |
| Socket extension | Level |



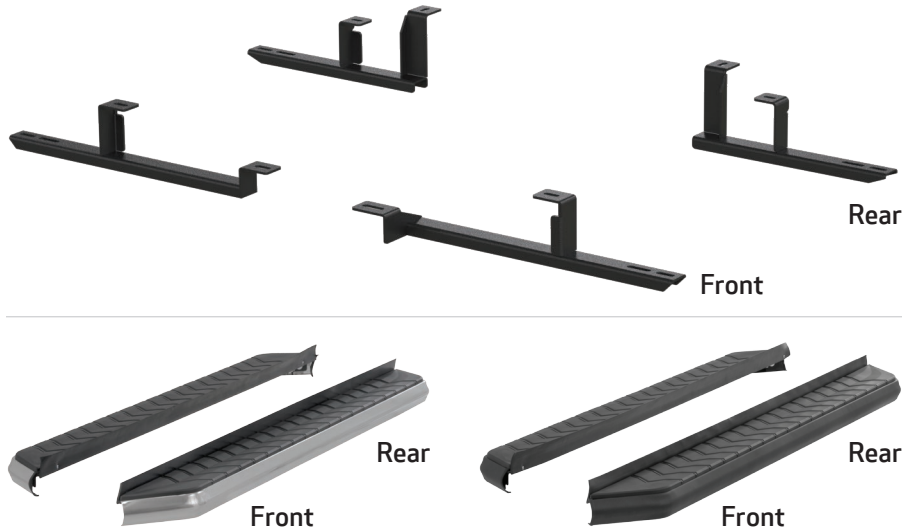
Level of Difficulty

Easy



Scan for helpful install tips

Product Image



Notes and Maintenance

Before you begin installation, read all instructions thoroughly.

Proper tools will improve the quality of installation and reduce the time required.

For stainless steel, polish may be used to clear small scratches and scuffs on the finish. Mild soap may be used also to clean the product.

For black finishes, mild soap may be used to clean the product.

Step 1

Starting on the driver side, locate the two mounting locations underneath the vehicle. Locate the front bracket for the driver side.

Remove the factory hex bolt from the rear mounting location. Insert a 70mm T-bolt plate into the front mounting location.

Place the front mounting bracket onto the vehicle and secure the rear end of the bracket with the previously removed factory hex bolt. Secure the front end of the bracket with a 10mm hex nut, lock washer and flat washer.

Snug the hardware, but do not fully tighten.



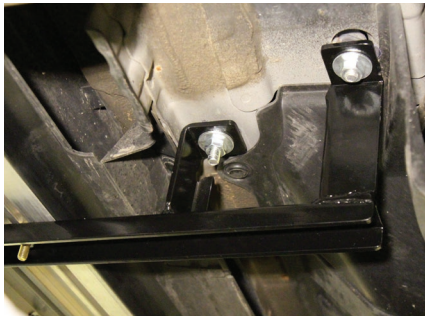
Step 2

Locate the rear bracket mounting locations.

Insert a 70mm T-bolt plate into the front mounting hole and a 65mm T-bolt plate into the rear mounting hole.

Place the rear mounting bracket onto the vehicle and secure with two 10mm hex nuts, lock washers and flat washers.

Snug the hardware, but do not fully tighten.



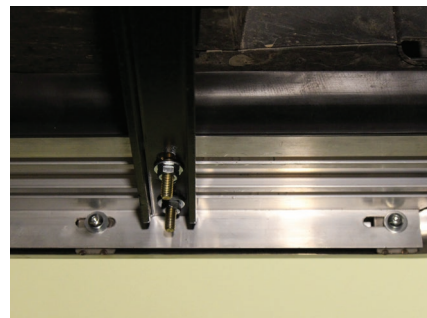
Step 3

Remove the 8mm nuts, 8mm lock washers and 8mm flat washers from the running board.

Place the running board onto the brackets and align the 8mm bolts with the slots in the brackets on the vehicle.

Attach the running board to the brackets using six 8mm bolts, lock washers, flat washers and nuts.

Snug the hardware, but do not fully tighten.



Step 4

Adjust and level the running board, centering it between the front and rear wheel wells.

With the running board in position, it is recommended to tighten all brackets to the vehicle first, followed by the running board connections.



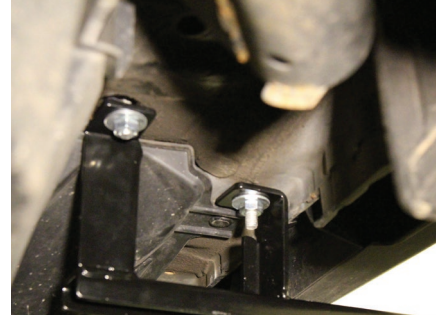
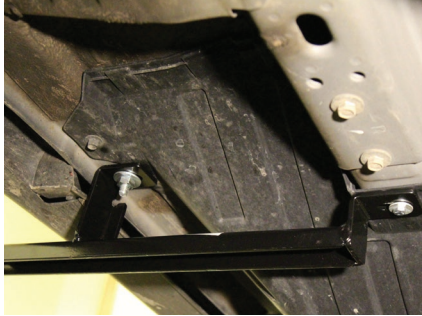
Step 5

To install the passenger side front mounting bracket, insert a 70mm T-bolt plate into the front mounting location.

Secure the rear mounting location of the bracket with the supplied 6mm hex nut, lock washer and flat washer.

Finish securing the bracket to the vehicle using a 10mm flat washer, lock washer and hex nut.

Repeat steps 2 through 4 on the passenger side of the vehicle.



Step 6

Congratulations on the installation of your brand new ARIES AeroTread™ running boards.

With the running boards installed, periodic inspections should be performed to ensure all mounting hardware remains tight.

To protect your investment, see the 'Notes and Maintenance' section on the first page of this instruction manual.

