

Parts List

1	Driver / left running board
1	Passenger / right running board
2	Mounting bracket, front
2	Mounting bracket, middle
2	Mounting bracket, rear
6	Bolt plate, 1/2", short
4	Bolt plate, 1/2", long
10	Flat washer, 1/2"
10	Lock washer, 1/2"
10	Hex nut, 1/2"
4	Bolt plate, 8mm
4	Flat washer, 8mm
4	Lock washer, 8mm
4	Hex nut, 8mm
10	Bolt retainer, plastic

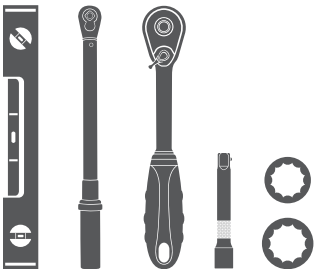
Additional Hardware*

12	Hex bolt, 8mm
12	Flat washer, 8mm
12	Lock washer, 8mm
12	Hex nut, 8mm

* Running boards are supplied with additional hardware. Quantities listed are in addition to the standard supplied hardware.

Tools Required

Ratchet	Extension
Socket, 13mm	Level
Socket, 1/2"	Torque wrench



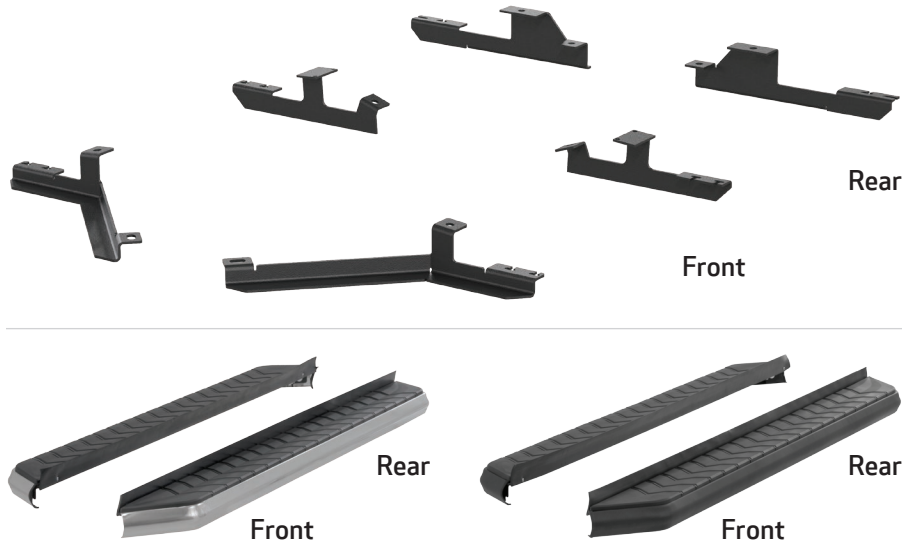
Level of Difficulty

Easy



Scan for helpful install tips

Product Image



Notes and Maintenance

Before you begin installation, read all instructions thoroughly.

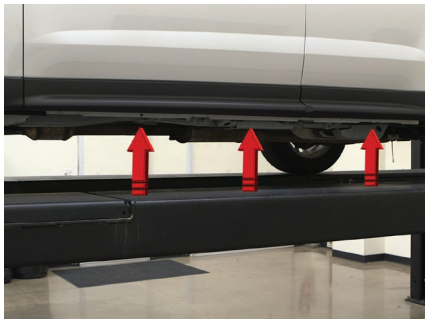
Proper tools will improve the quality of installation and reduce the time required.

For stainless steel, polish may be used to clear small scratches and scuffs on the finish. Mild soap may be used also to clean the product.

For black finishes, mild soap may be used to clean the product.

Step 1

Starting on the driver side, locate the three mounting locations underneath the vehicle.



Step 2

Insert a short 1/2" bolt plate into each of the mounting points on the vehicle frame. Slide a plastic bolt retainer over the threads of the bolts to hold them in place.

Place the front mounting bracket onto the vehicle and secure with a 1/2" flat washer, 1/2" lock washer and 1/2" hex nut.

Snug the hardware, but do not fully tighten.



Step 3

Locate the middle mounting tab.

Insert an 8mm bolt plate into each of the openings on both sides of the vehicle frame.

Insert a short 1/2" bolt plate into the slot. Slide a plastic bolt retainer over the thread of the bolt to hold the bolt plate in place.

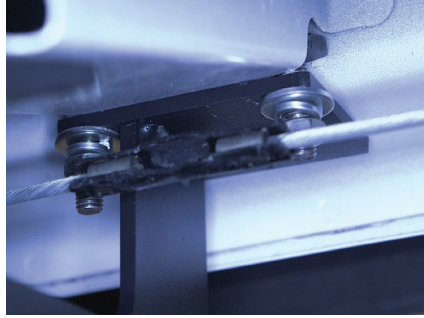
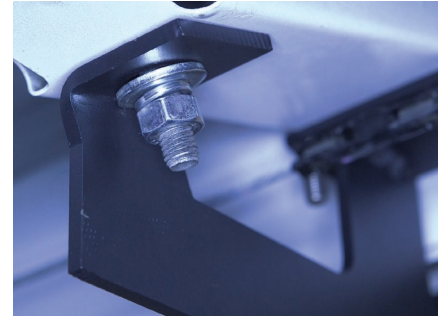


Step 4

Place the middle driver-side bracket onto the vehicle and secure the rear mounting tab with a 1/2" flat washer, 1/2" lock washer and 1/2" hex nut.

Finish securing the front mounting tabs with two 8mm flat washers, two 8mm lock washers and two 8mm hex nuts.

Snug the hardware, but do not fully tighten.



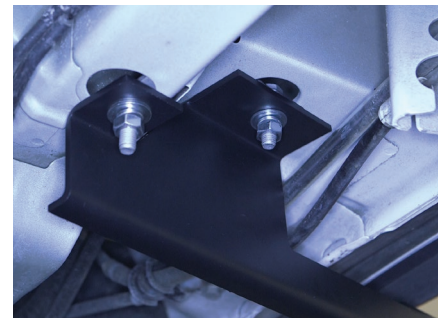
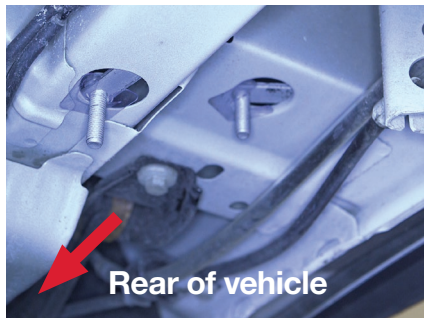
Step 5

Locate the rear mounting tab.

Insert two long 1/2" bolt plates. Slide two plastic bolt retainers over the threads of the bolts to hold the bolt plates in place.

Place the rear driver-side bracket onto the vehicle and secure with two 1/2" flat washers, two 1/2" lock washers and two 1/2" hex nuts.

Note: Ensure the rear bracket is positioned toward the back of the vehicle as shown.



Step 6

Remove the 8mm nuts, 8mm lock washers and 8mm flat washers from the running board.

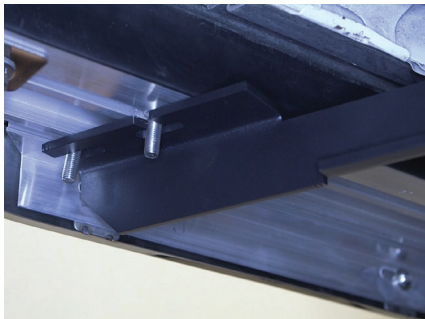
Place the running board onto the brackets and align the 8mm bolts with the slots in the brackets on the vehicle.



Step 7

Attach the running board to the brackets using six 8mm bolts, six 8mm lock washers, six 8mm flat washers and six 8mm nuts.

Snug the hardware, but do not fully tighten.



Step 8

Adjust and level the running board, centering it between the front and rear wheel wells.

With the running board in position, it is recommended to tighten all brackets to the vehicle first, followed by the running board connections.



Step 9

Repeat steps 1 through 8 on the passenger side of the vehicle.

Congratulations on the installation of your brand new ARIES AeroTread™ running boards.

With the running boards installed, periodic inspections should be performed to ensure all mounting hardware remains tight.

To protect your investment, see the 'Notes and Maintenance' section on the first page of this instruction manual.

