

Parts List

1	Driver / left side bar
1	Passenger / right side bar
2	Mounting bracket, front
2	Mounting bracket, rear
8	Clip on nut, M10
16	Lock washer, M10
16	Flat washer, M10 x 24mm
8	Nut, M10
16	Hex bolt, M10 x 35mm
8	Flat washer, M10 x 20mm
8	Hex bolt, M8 x 25mm
8	Lock washer, M8
8	Flat washer, M8 x 24mm

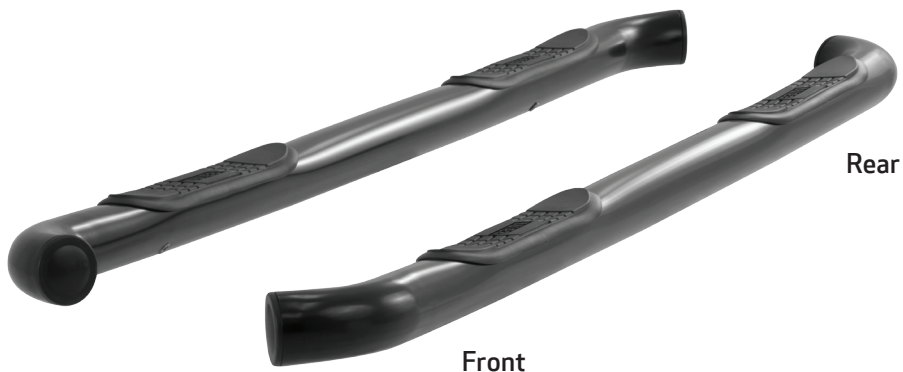
Level of Difficulty

Easy



Scan for helpful install tips

Product Image



Tools Required

Ratchet	Tape measure
Socket, 13mm	Wrench, 16mm
Socket, 16mm	Hex bit, 6mm
Level	

Brackets



Torque Specifications

METRIC		
M6 bolt		3 ft.-lbs.
M8 bolt		7 ft.-lbs.
M10 bolt		16 ft.-lbs.
M12 bolt		28 ft.-lbs.
SAE		
1/4" bolt		3 ft.-lbs.
5/16" bolt		7 ft.-lbs.
3/8" bolt		16 ft.-lbs.
7/16" bolt		20 ft.-lbs.
1/2" bolt		28 ft.-lbs.

Use above torque setting unless otherwise noted

Notes and Maintenance

Before you begin installation, read all instructions thoroughly.

Proper tools will improve the quality of installation and reduce the time required.

To protect the product, wax after installing. Regular waxing is recommended to add a protective layer over the finish. Do not use any type of polish or wax that may contain abrasives that could damage the finish.

For gloss black finishes, mild soap may be used to clean the product.

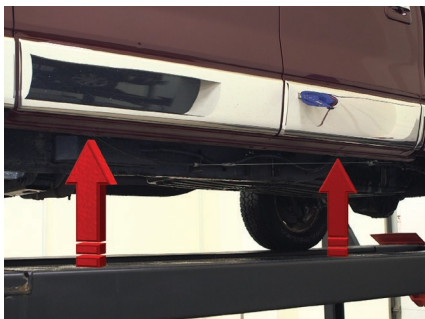
Step 1

Starting on the driver side of the vehicle, locate the three mounting locations along the rocker panel.

This installation will use the front and rear mounting locations.

The mounting brackets are specific to a front or rear mounting location.

When mounting the brackets have the cradle facing towards the middle of the truck for proper placement.



Step 2

Starting at the front of the driver side, remove the factory tape covering the mounting holes.

On the inner rocker panel, insert a M10 clip-nut onto each mounting location.



Step 3

Attach the top of the bracket by threading two M10 hex bolts, lock washers and large flat washers into the M10 clip nuts from step 2.

Insert a M10 hex bolt and a large flat washer into the bottom mounting holes and secure with a second small M10 flat washer, lock washer and nut.

Snug the hardware, but do not fully tighten.



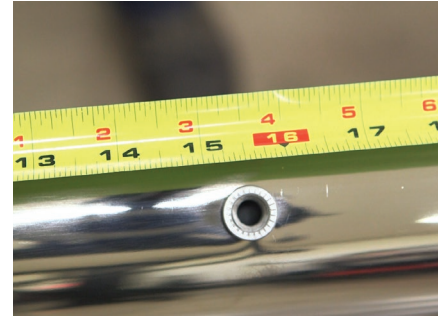
Step 4

Repeat steps 1 through 3 for installing the rear mounting bracket.



Step 5

To determine the front of a side bar, the measurement from the end of the side bar to the center of the rivet nut should be about 15 1/2".

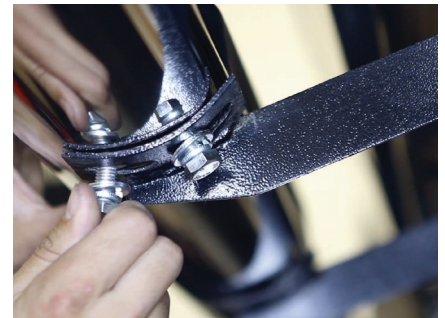


Step 6

Carefully mount the driver-side bar into place.

Attach the side bar to the mounting bracket using M8 bolts, lock washers and flat washers.

Snug the hardware, but do not fully tighten.



Step 7

Finish the passenger side bar installation by repeating the installation process used on steps 2 through 6 on the driver side.

Level and adjust the side bars to the desired position and tighten all hardware.



Step 8

Congratulations on the installation of your new ARIES 3" round side bars.

With the side bars installed, periodic inspections should be performed to ensure all mounting hardware remains tight.

To protect your investment, see the 'Notes and Maintenance' section on the first page of this instruction manual.

