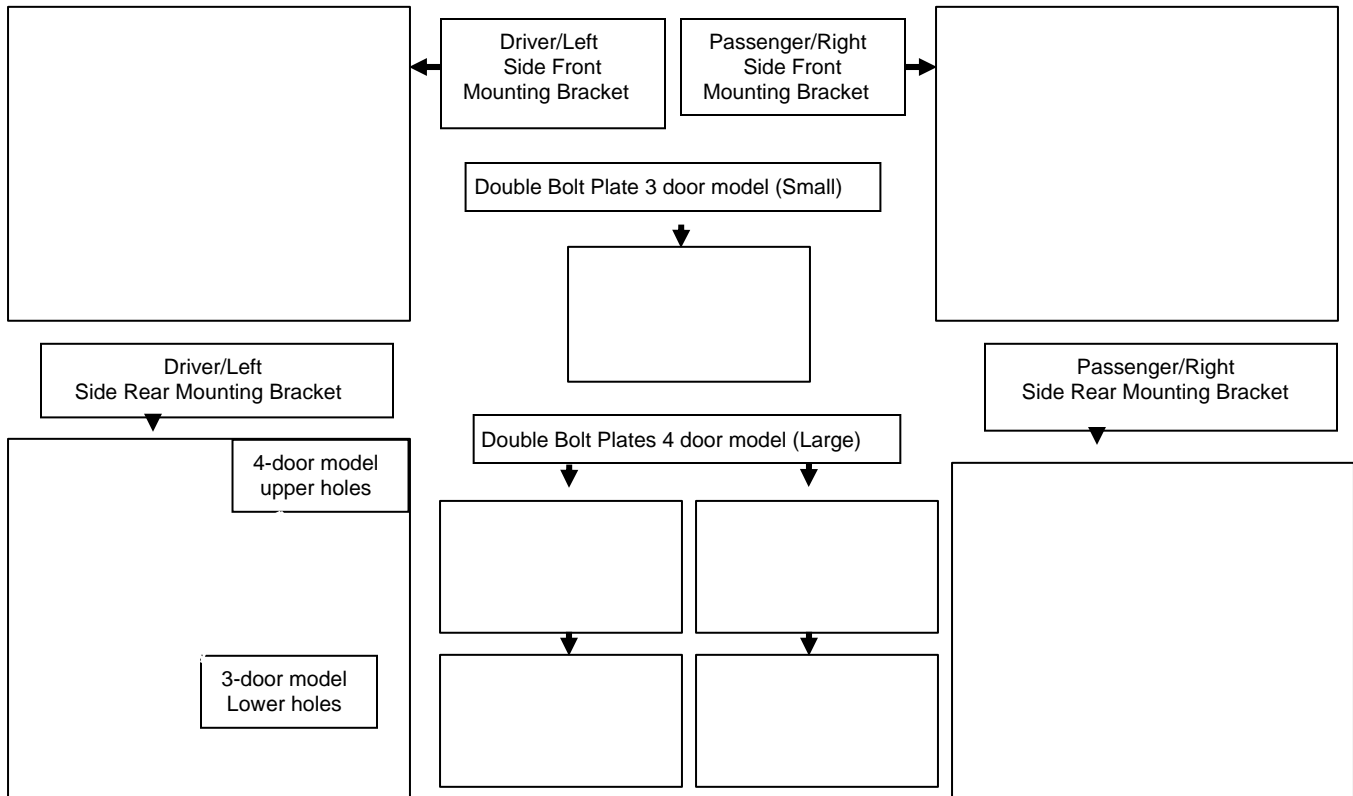
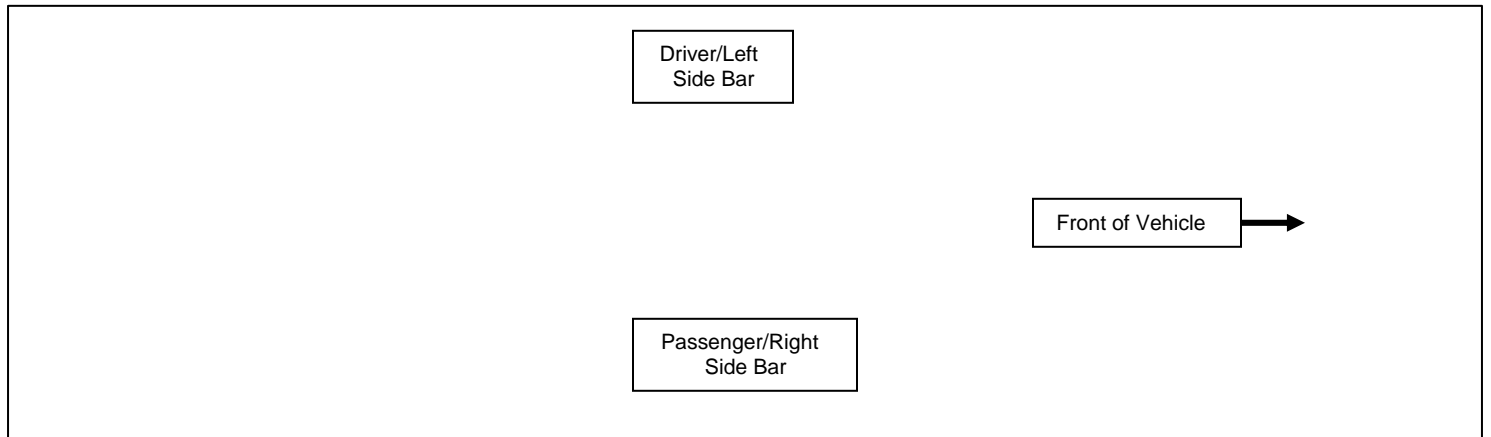


INSTALLATION INSTRUCTIONS

1997- 2003 FORD F-150/250 LT DUTY, SUPER CAB
PART NUMBER # 203008 / 203008-2

PARTS LIST:

1	Driver/Left Sidebar	8	10mm ID x 26mm OD Flat Washers
1	Passenger/Right Sidebar	8	10mm Lock Washers
1	Driver/Left Front Mounting Bracket	8	10mm Hex Nuts
1	Passenger/Right Front Mounting Bracket	4	12mm x 60mm Hex Bolts
1	Driver/Left Rear Mounting Bracket	4	12mm Lock washers
1	Passenger/Right Rear Mounting Bracket	4	12MM ID X 31MM OD Flat Washers
4	10mm Double Bolt Plates (Large)	1	10mm Double Bolt Plates (Small)



PROCEDURE:

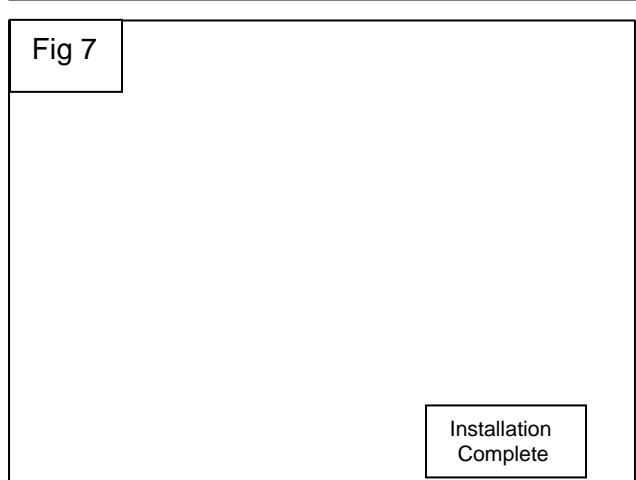
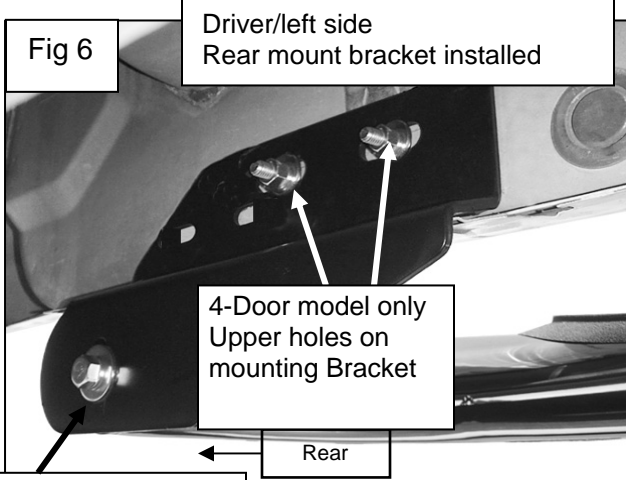
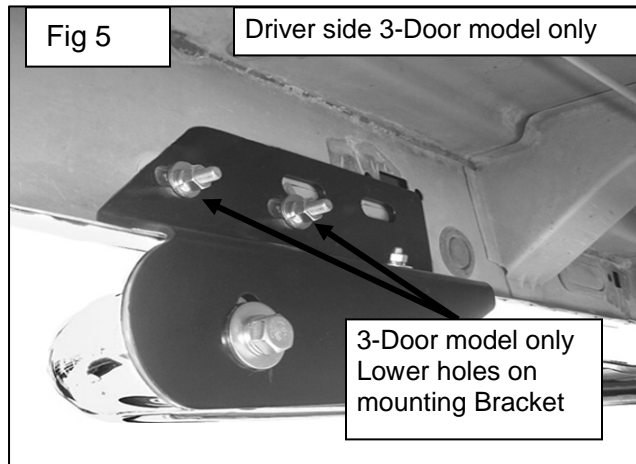
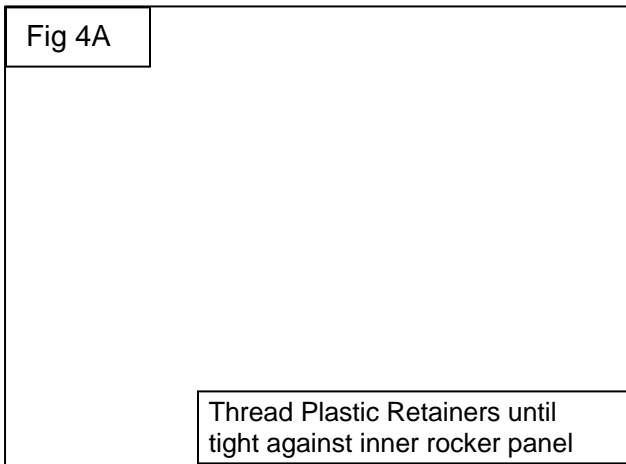
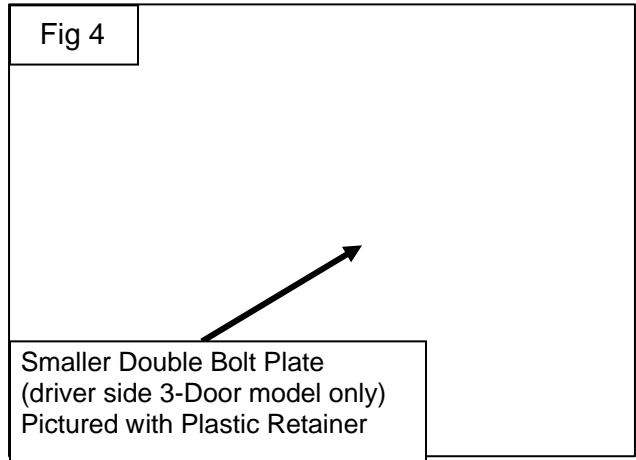
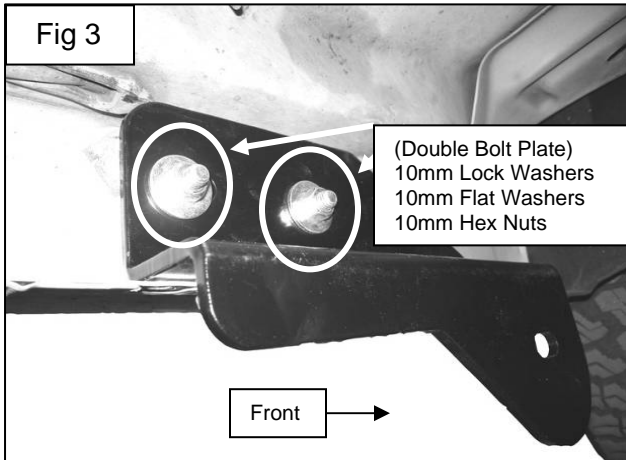
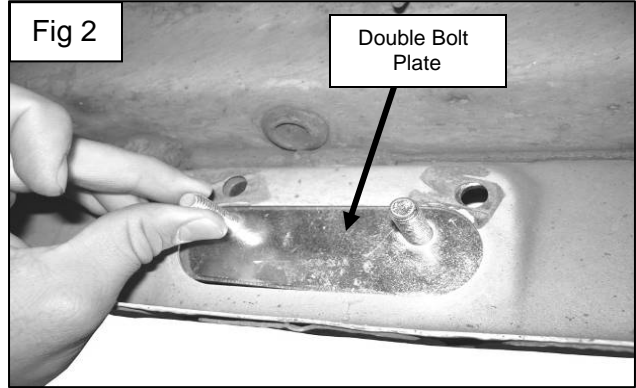
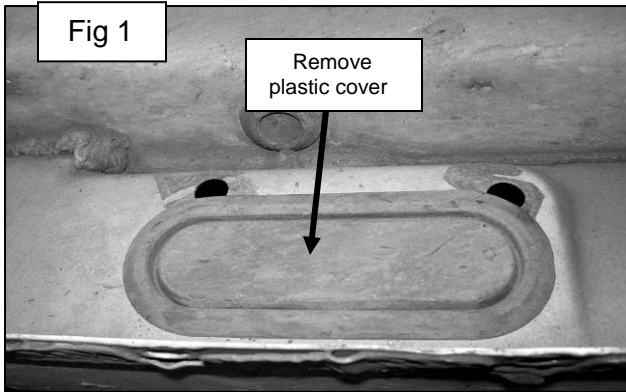
1. REMOVE CONTENTS FROM BOX. VERIFY ALL PARTS ARE PRESENT. READ INSTRUCTIONS CAREFULLY BEFORE STARTING INSTALLATION.
2. Starting on the front driver/left side of vehicle from the inner rocker panel remove the plastic grommet seen in (Fig 1), Insert (1) Double Bolt Plate (Large) into factory slotted hole as seen in (Fig 2).
3. Select the Driver/left front mounting bracket from the list of parts above, Hold Double Bolt Plate from one side while you position and attach Mounting Bracket to opposite side. Once you attach one bolt, with (1) 10mm flat washer, (1) 10mm lock washer & (1) 10mm nut proceed to attach the second bolt on the Double Bolt Plate using the included (1) 10mm flat washer, (1) 10mm lock washer, and (1) 10mm Nut seen in (Fig 3). Snug but do not tighten hardware at this time.
4. Note for 1997-98 3-Door models only: For the install of rear brackets, the 3-door model uses the included (1) 10mm Smaller Double Bolt Plate for driver side rear Bolt Plate installation. Thread (1) 10mm Plastic Retainer partially onto (1) threaded end on the Bolt Plate, Insert the other end of the Bolt Plate, (without plastic retainer), into the large round hole and back out the smaller round hole on the inside of the rocker panel. Continue to thread the Plastic Retainer down the Bolt Plate until it is flush with the inner rocker panel. Thread (1) Plastic Retainer onto the remaining threaded end on the Bolt Plate, as seen in (Fig 4 & 4A) . **IMPORTANT: The Plastic Retainers are designed to prevent the Bolt Plate from falling into the body.** Position the Rear driver side mounting bracket to the bolt plate Nut (Refer to above parts list for which holes to use on bracket) attach with (2) 10mm flat washer, (2) 10mm lock washer & (2) 10mm nut as seen in (Fig 5). Snug but do not tighten hardware at this time.
5. If you have the 4 door model: Select the larger Double bolt plate and begin to install by holding the Double Bolt Plate from one side while you position and attach Mounting Bracket to opposite side. Once you attach one bolt, with (1) 10mm flat washer, (1) 10mm lock washer & (1) 10mm nut proceed to attach the second bolt on the Double Bolt Plate using the included (1) 10mm flat washer, (1) 10mm lock washer, and (1) 10mm Nut (Refer to above parts list for which holes to use on bracket) (Fig 6) shows bracket attached. Snug but do not tighten hardware at this time.
6. Once the Mounting Brackets are partially mounted, carefully position Sidebar onto Mounting Brackets. Attach Sidebar to Brackets using the included (2) 12mm X 60mm Hex Head Bolts, (2) 12mm Lock Washers, and (2) 12mm Flat Washers (Fig 7). Snug but do not tighten hardware at this time
7. Level and adjust Sidebar; then tighten all hardware at this time.
8. Repeat steps 2, 3, 5 & 6 for Passenger/Right Sidebar.
9. Do periodic inspections to the installation to make sure all hardware is secure and tight.

To protect your investment , wax this product after installing. Regular waxing is recommended to add a protective layer over the finish. Do not use any type of polish or wax that may contain abrasives that could damage the finish.

For stainless steel : Aluminum polish may be used to polish small scratches and scuffs on the finish. Mild soap may be used also to clean the Sidebar.

For gloss black finishes : Mild soap may be used to clean the Sidebar.

FRONT DRIVER/LEFT SIDE SHOWN



12mm x 60 mm Hex bolt
12mm Flat washer
12mm Lock washer