



# INSTALLATION MANUAL

111002

## Level of Difficulty

Moderate

Installation difficulty levels are based on time and effort involved and may vary depending on the installer level of expertise, condition of the vehicle and proper tools and equipment.

## Parts List

Qty	Description
1	Headache rack
1	Driver-side/left mounting bracket
1	Passenger-side/right mounting bracket
4	Hex bolt, M10 - 5mm x 40mm
2	Hex bolt, M10 - 1.5mm x 65mm
10	Flat washer, M10
6	Lock washer, M10
2	Nut plate, M10-1.5mm
4	Hex nut, M10-1.5mm
4	Hex bolt, M12 - 1.75mm x 40mm
8	Flat washer, M12
4	Lock washer, M12
4	Hex nut, M12

## Tools Required

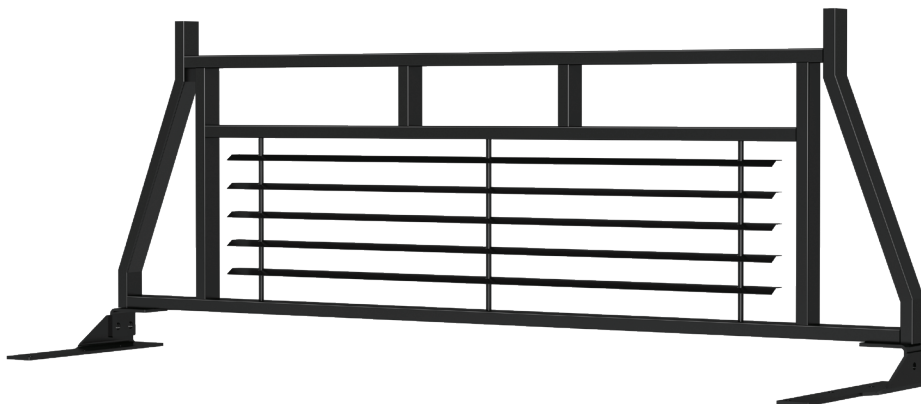
Ratchet	Wrench, 16mm
Drill	Wrench, 18mm
Drill Bit, 13/32"	Socket, 16mm
Torque wrench	Socket, 18mm

## Torque Specifications

M10 bolt	45 ft-lbs.
M12 bolt	79 ft-lbs.

Use above torque setting unless otherwise noted

## Product Photo



## NOTICE

Visit [www.ariesautomotive.com](http://www.ariesautomotive.com) for a full-color copy of this instruction manual, as well as helpful videos, guides and much more!

Before you begin installation, read all instructions thoroughly.

Proper tools will improve the quality of installation and reduce the time required.

Periodic inspection of your product should be performed to ensure all hardware and / or components remain secure.

To help prevent damage to the product or vehicle, refer to the specified torque specifications when securing hardware during the installation process.

## Maintenance

To protect the product, wax after installing. Regular waxing is recommended to add a protective layer over the finish. Do not use any type of polish or wax that may contain abrasives that could damage the finish.

For black finishes, mild soap may be used to clean the product.

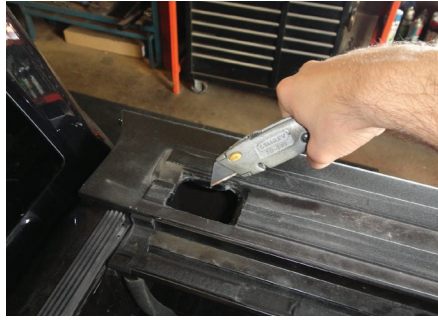
## Product Registration and Warranty

ARIES stands behind our products with industry-leading warranties. To get copies of the product warranties, register your purchase or provide feedback, visit: [warranty.curtgroup.com/surveys](http://warranty.curtgroup.com/surveys)

### Step 1

Cut a hole in the plastic trim on the top of the box to expose the stake pocket. The center of the stake pocket should be approximately 4.25" from the front of the box and 1" in from the inside of the box.

Place a M10 x 65mm bolt, M10 lock washer, and M10 washer through the hole closest to the bent flange on the drivers side bracket and very loosely start the M10 nut plate. Insert the nut plate into the stake pocket and tighten the bolt until snug.



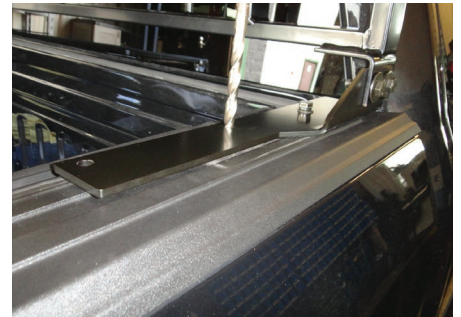
### Step 2

With help, place the headache rack onto the upper rails of the truck box and carefully insert the nut plates into the truck stake pockets.

Attach the driver-side mounting bracket to the bottom of the inside of the headache rack with two M12 bolts,

four M12 flat washers, two lock washers and two M12 nuts. Snug the hardware, but do not fully tighten. Repeat on the passenger-side mounting bracket.

Align the mounting plates to the edge of the truck box. Once it is aligned, drill the mounting holes using a 13/32" drill bit.



### Step 3

Secure the headache rack to the truck rails using two M10 x 40mm bolts, four M10 flat washers, two M10 lock washers and two M10 nuts on each side.

At this time, adjust the headache rack to the desired location. With the headache rack in position, it is recommended to tighten all brackets to the vehicle first, followed by the headache rack connections.

Torque all M10 hardware to 45 ft-lbs.  
Torque all M12 hardware to 79 ft-lbs.



### Step 4

Congratulations on the installation of your new ARIES headache rack.

With the headache rack installed, periodic inspections should be performed to ensure all mounting hardware remains tight.

